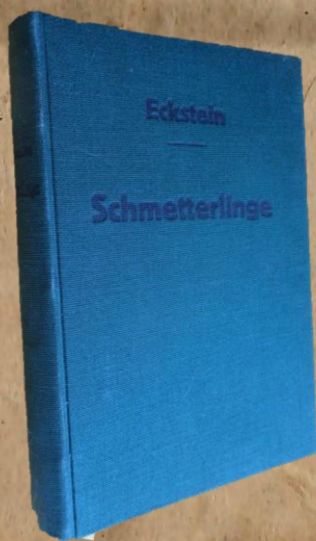


Bibliothek  
Familie Rapp  
Immenstadt

Eckstein, Karl:

Die Schmetterlinge  
Deutschlands mit besonderer  
Berücksichtigung ihrer  
Biologie

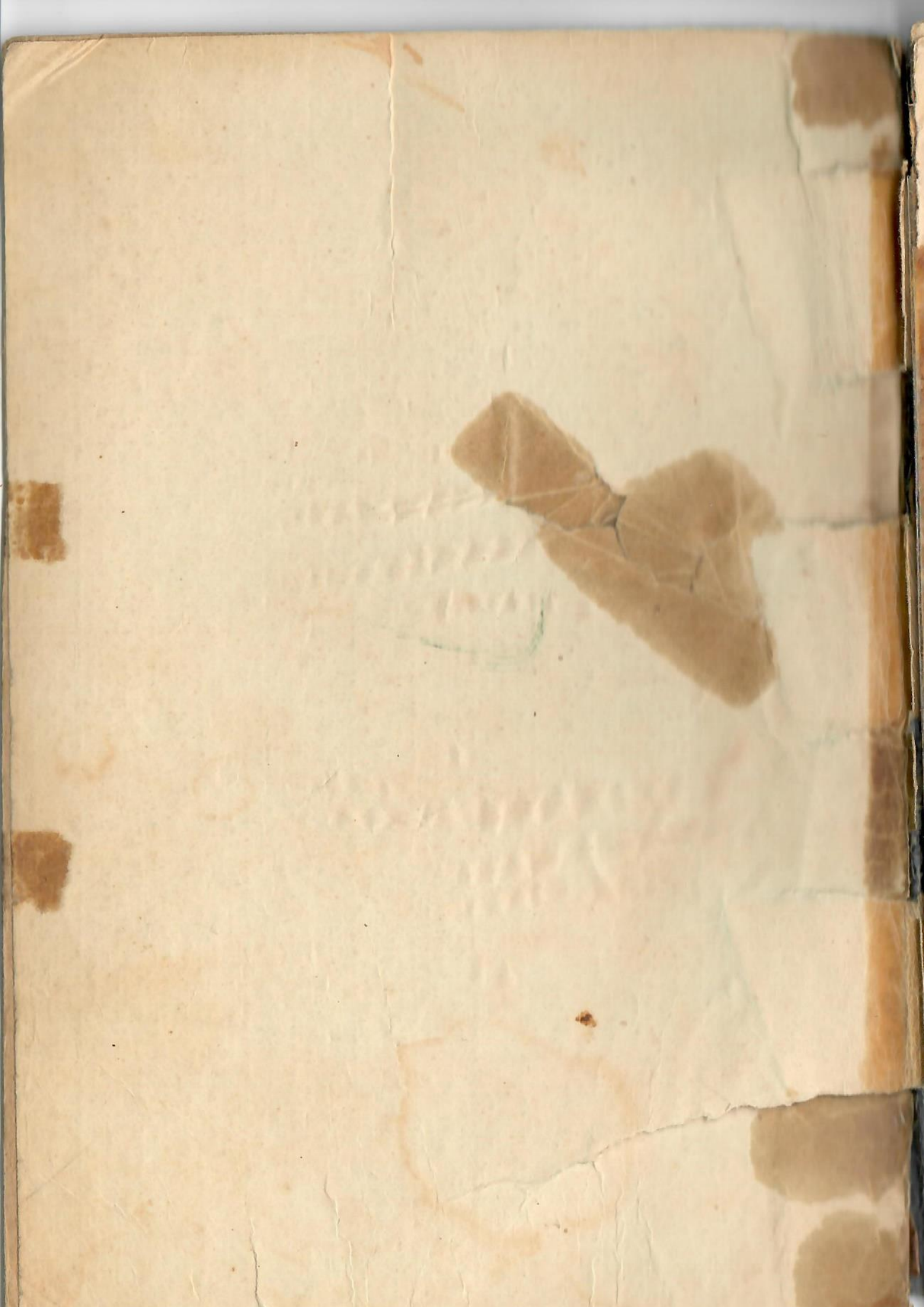


1913



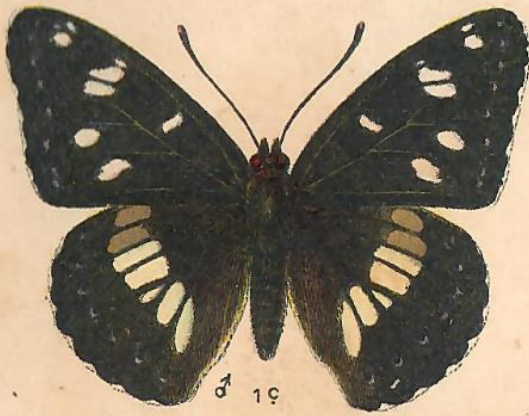
Seite 1-3  
fehlen

1. *Collas palaeno*, var. *europomus*, 2. *hyale*, 3. *edusa*.

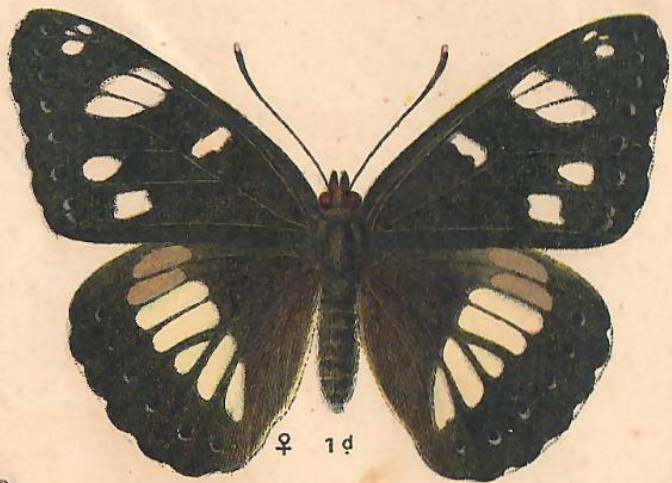




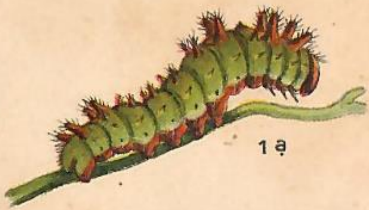
1. *Apatura iris*, 2. *ilia* (2<sup>d</sup> var. *clytie*).



♂ 1c



♀ 1d



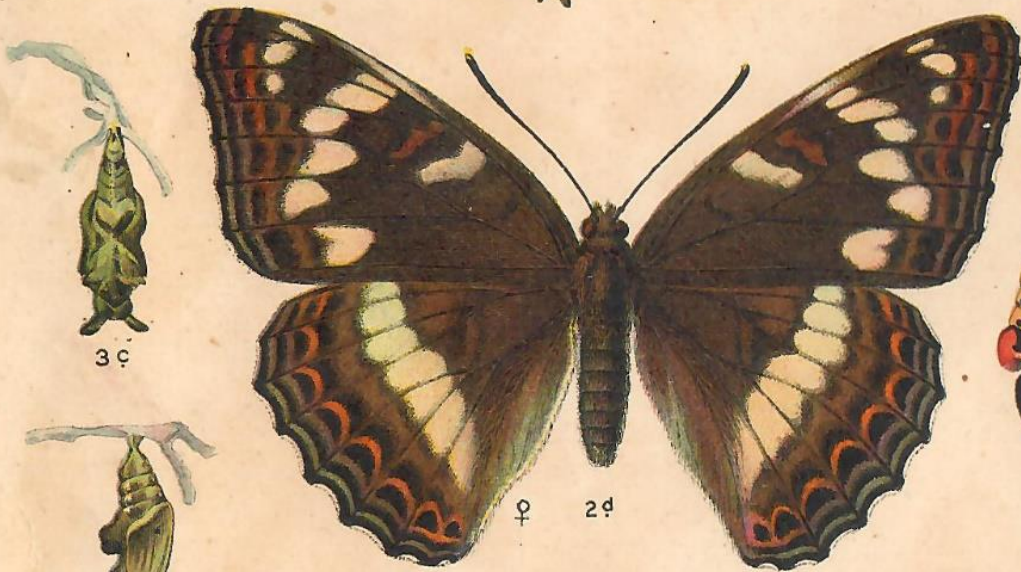
1a



1b



2a



♀ 2d



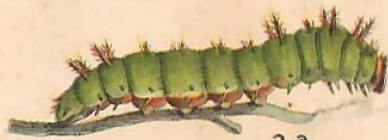
3c



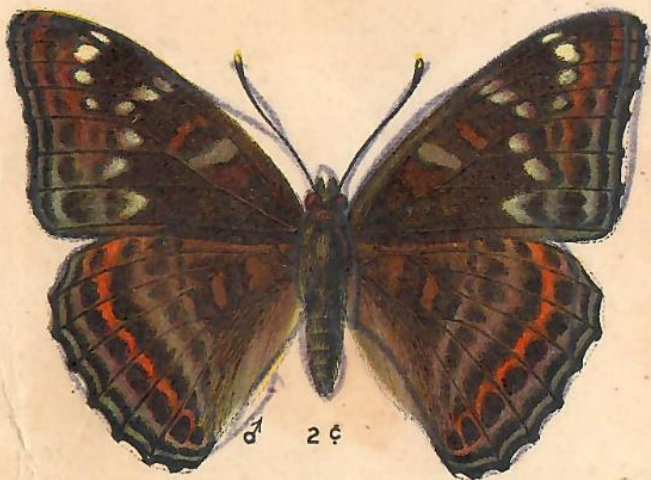
2b



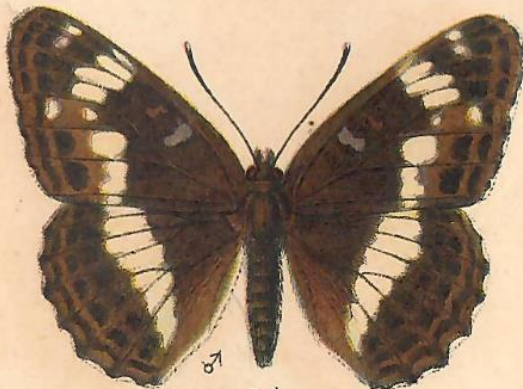
3b



3a

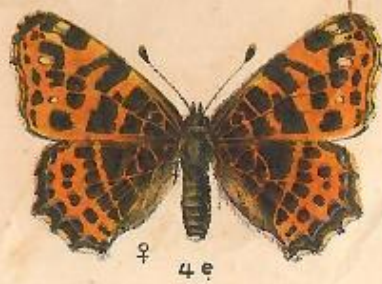


♂ 2e

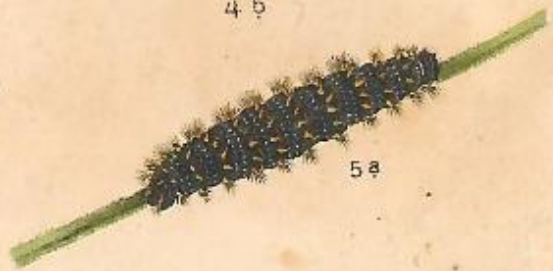
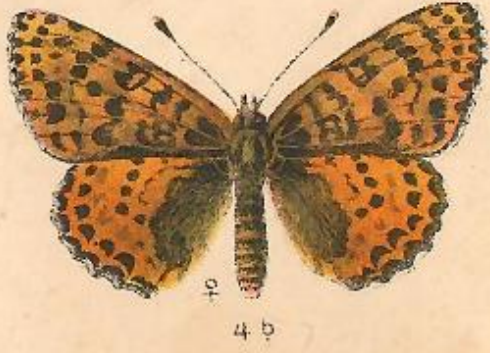


♂ 3d

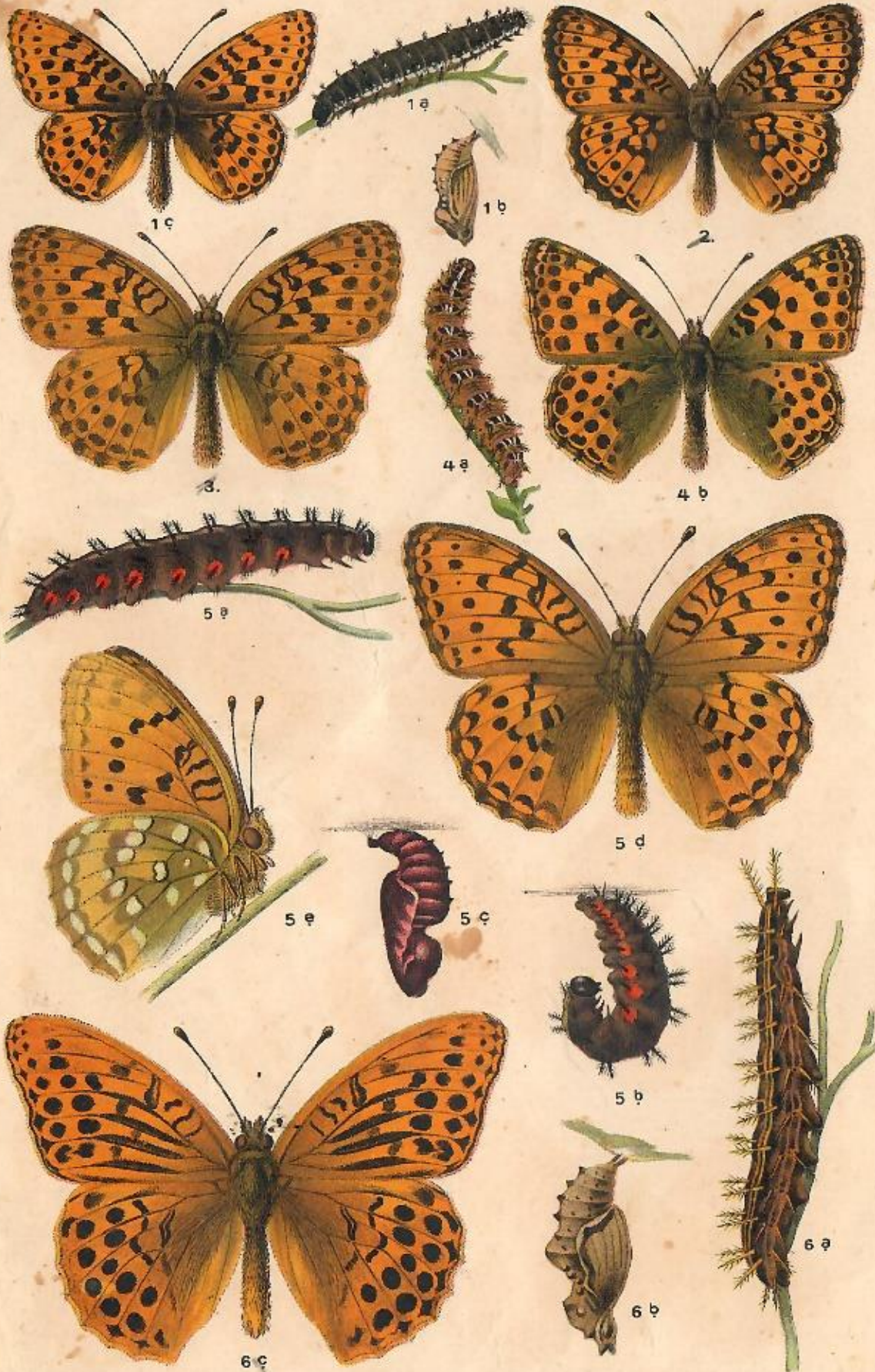




1. *Vanessa polychloros*, 2. *antiopa*. 3. *Polygonia C-album*.



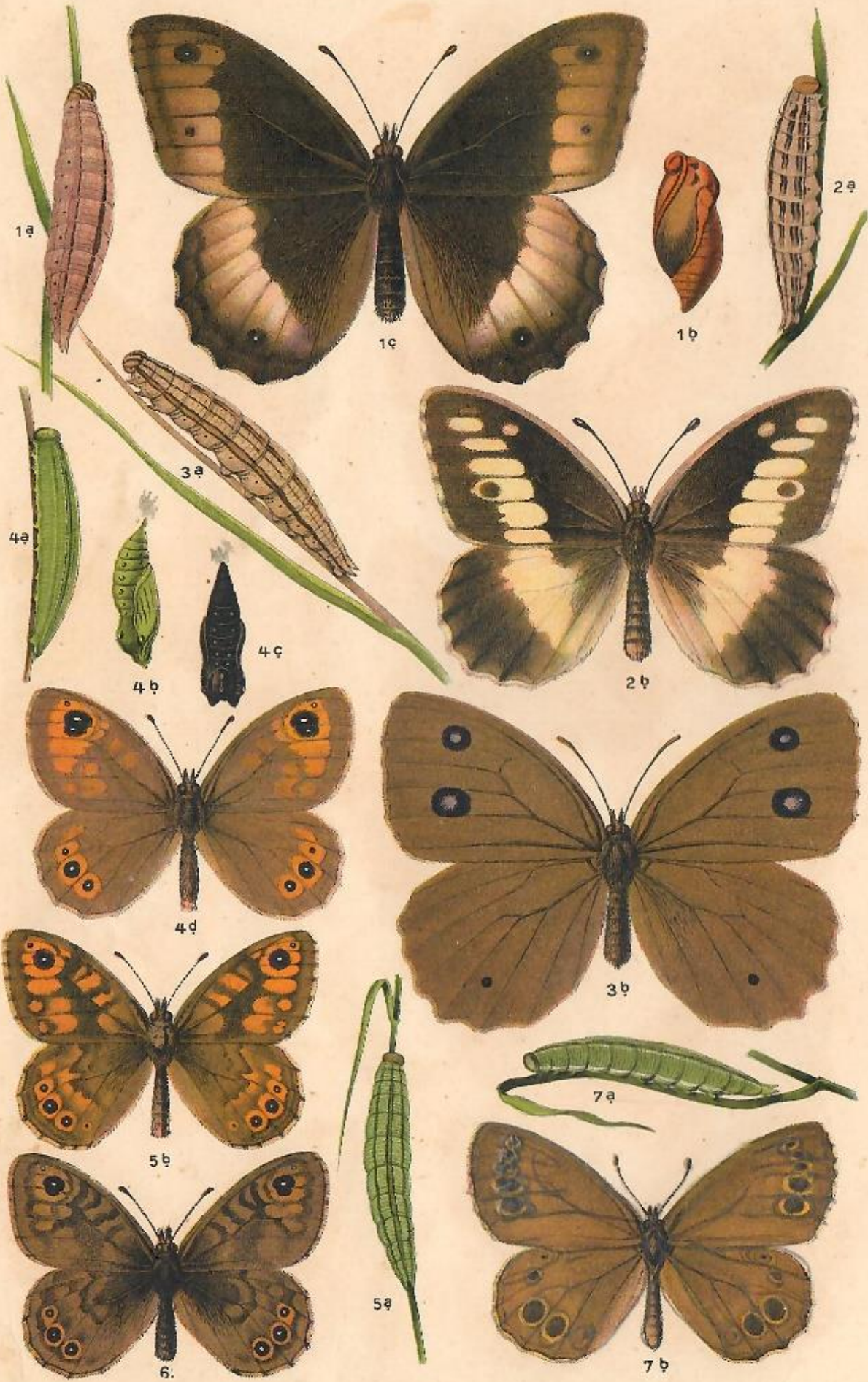




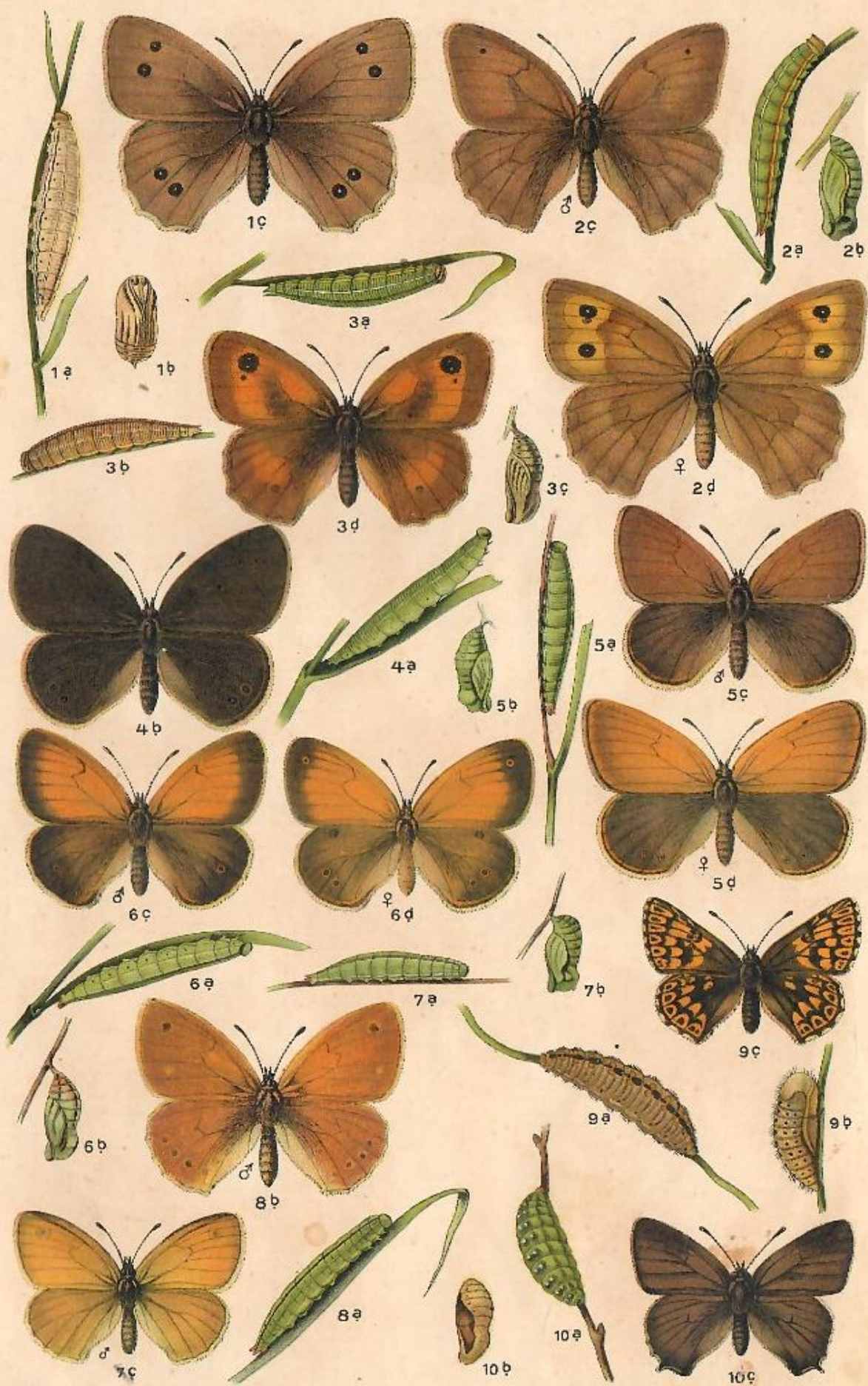
Argynnis euphrosyne, 2. ino, 3. daphne, 4. lathonia, 5. aglaia,



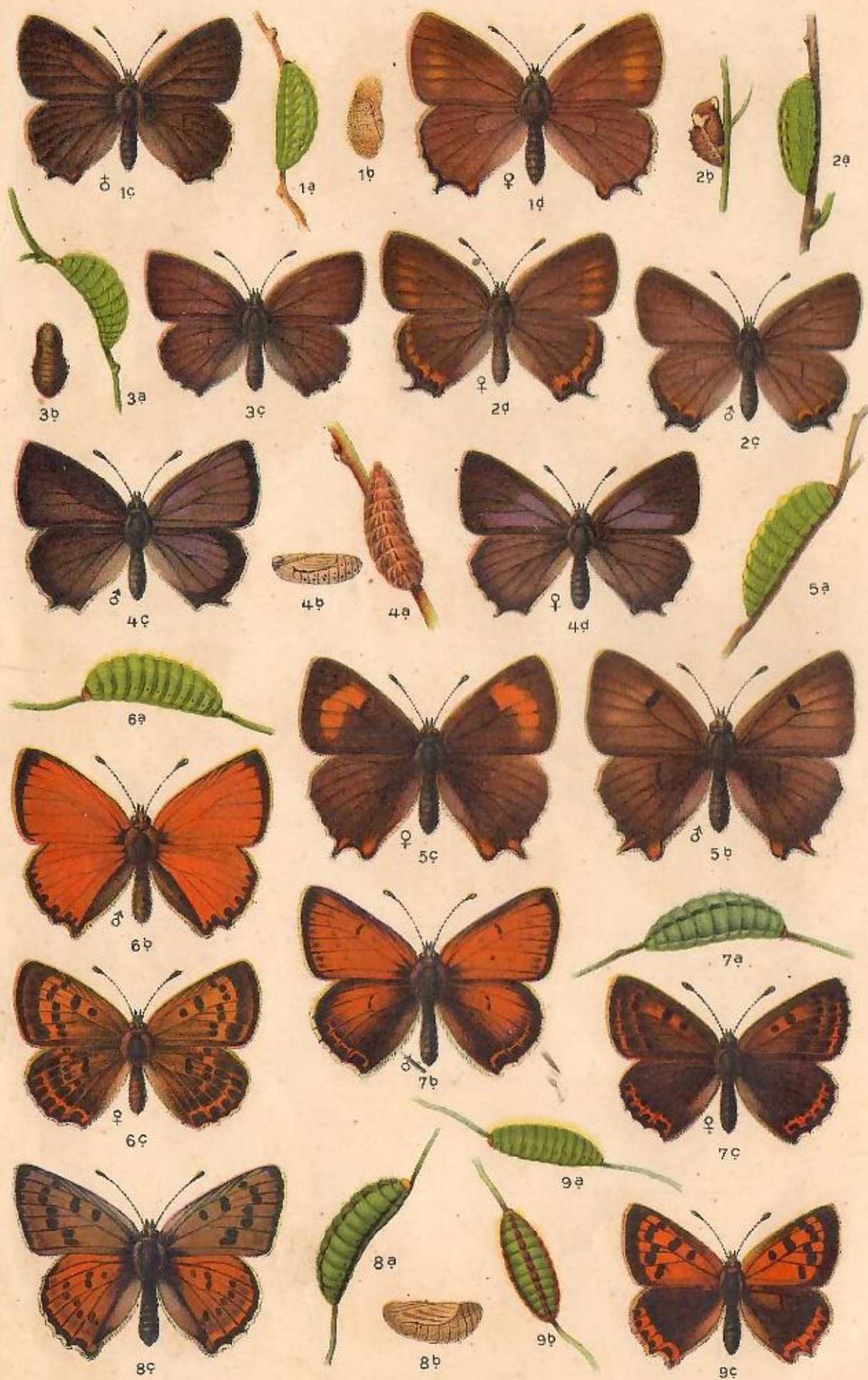
1. *Melanargia galathea*. 2. *Erebia epiphron*, 3. *medusa*,  
 4. *aethiops*. 5. *eurvale*. 6. *Satyrus circe*, 7. *alcyone*, 8. *semele*.



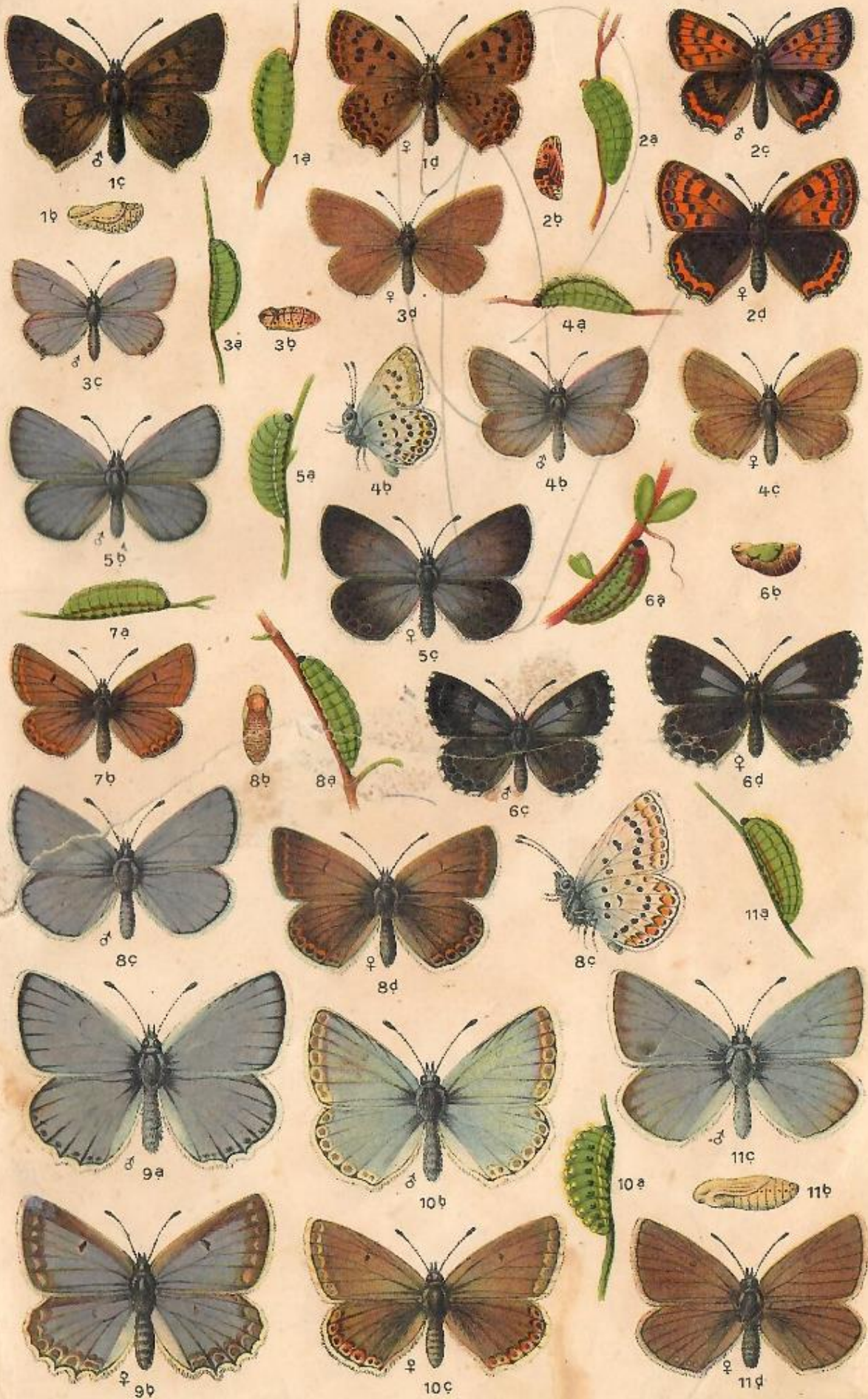
1. *Satyrus hermione*. 2. *briseis*. 3. *drvas*. 4. *Pararge maera*.



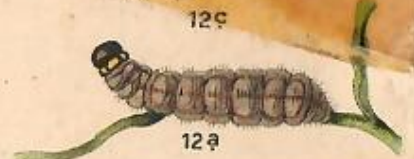
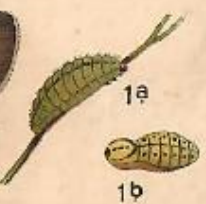
1. *Aphantopus hyperanthus*. 2. *Epinephele lycan*; 3. *tithonus*.  
 4. *Coenonympha oedipus*. 5. *inhis*. 6. *arcania*. 7. *nymphilus*.



1. *Thecla ilicis*, 2. *pruni*. 3. *Callophrys rubi*. 4. *Zephyrus quercus* 5. *betulae*. 6. *Chrysonhanus virgaureae* 7. *hippothoë*



1. *Chrysophanus dorilis*, 2. *amphidamas*. 3. *Lycaena argiades*,  
 4. *argus*, 5. *antileta*, 6. *orion*, 7. *astrarche*, 8. *icarus*, 9. *meleager*









1. *Smerinthus populi*, 2. *ocellata*. 3. *Dilna tiliae*. 4. *Sphinx ligustri*.



1. *Sphinx ligustri*. 2. *Protoparce convolvuli*. 3. *Hyloicus*



1. *Deilephila galii*, 2. *euphorbiae*. 3. *Chaerocampa elpenor*.

4. *Meteorus parcellus*, 5. *Macroglossa stellatarum*

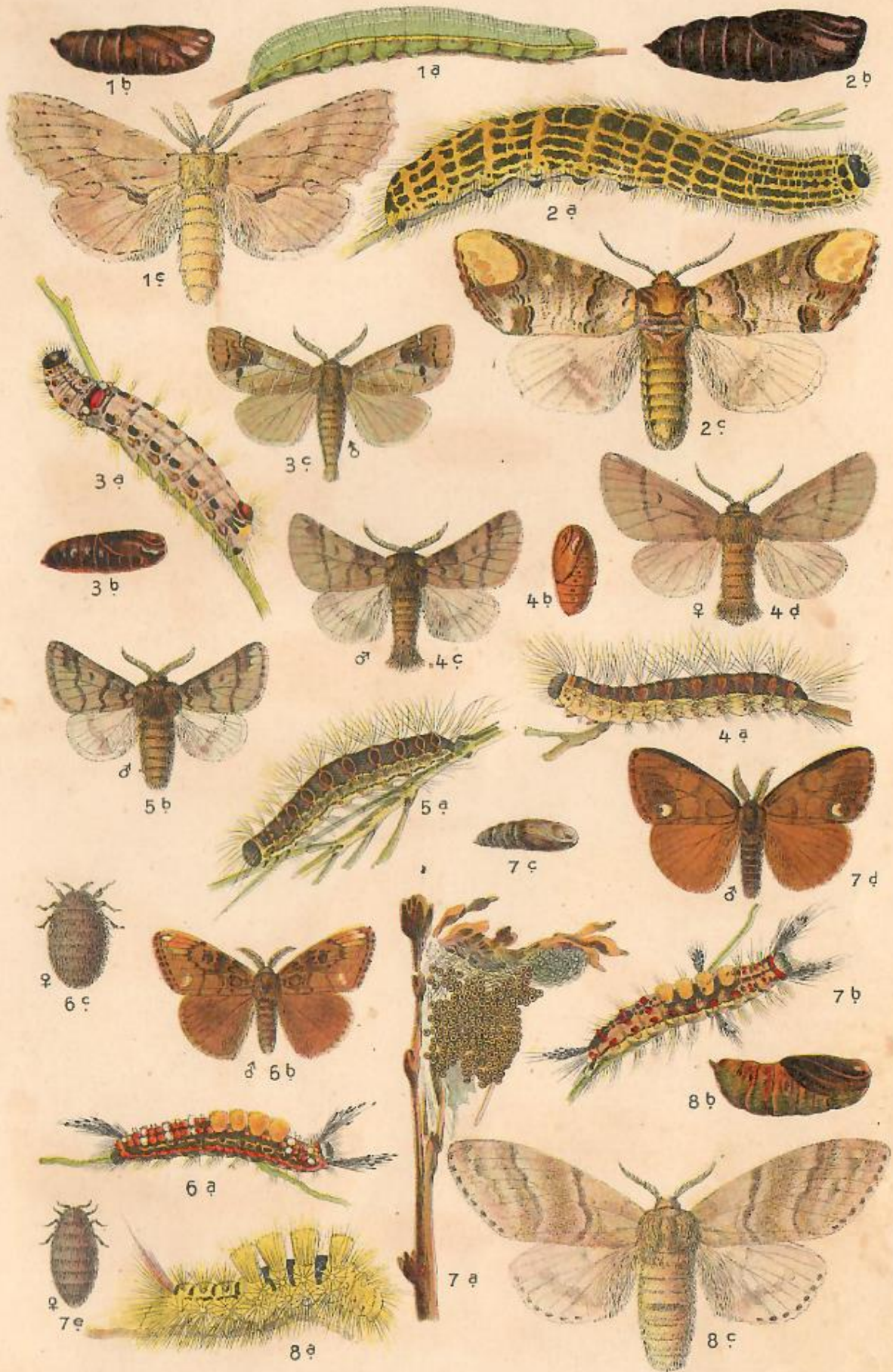


1. *Hemaris fuciformis*, 2. *scabiosae*. 3. *Cerura furcula*.

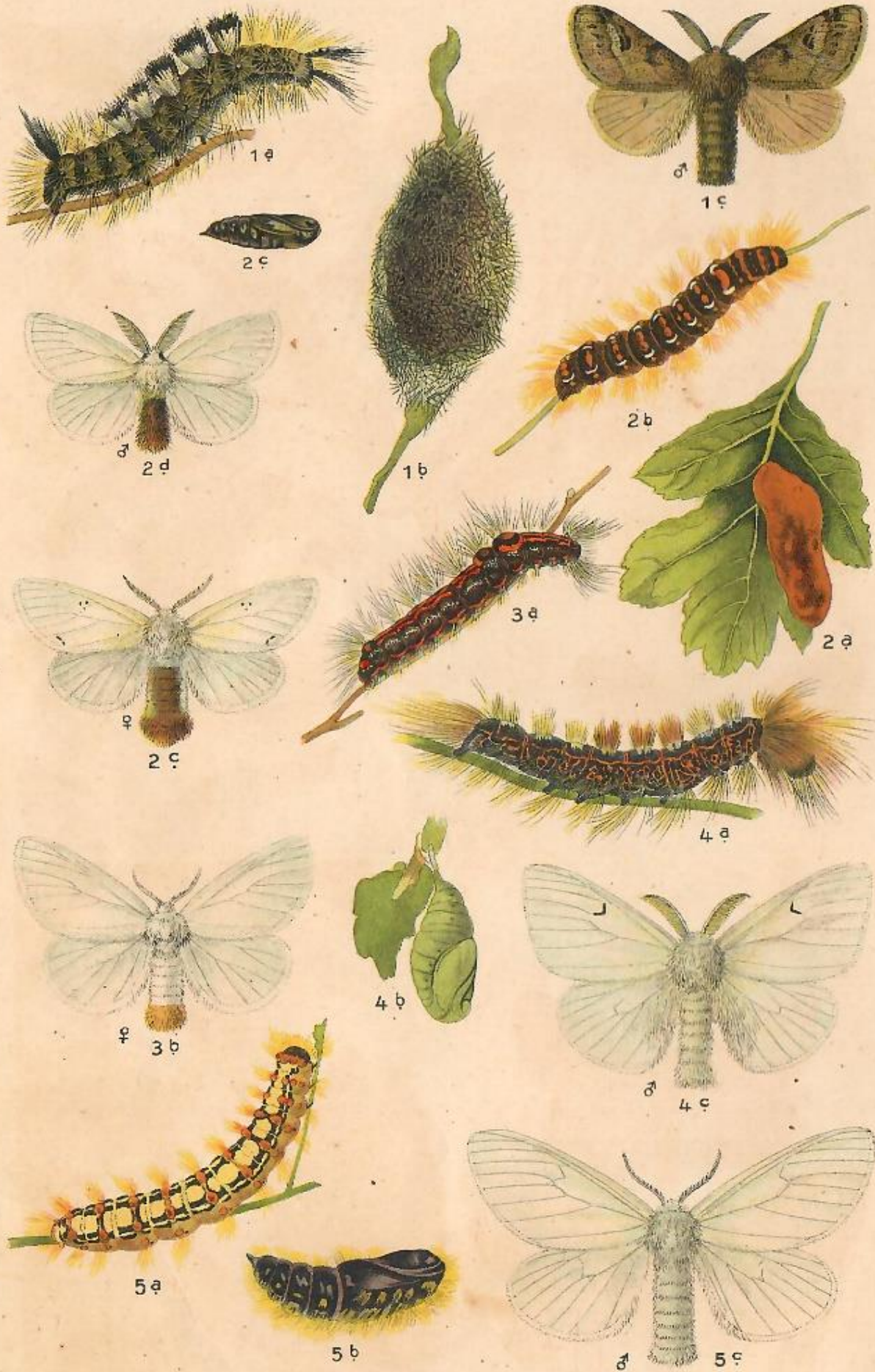
4. *Diospyros...* 5. *Phanacras...* 6. *Phanacras...*



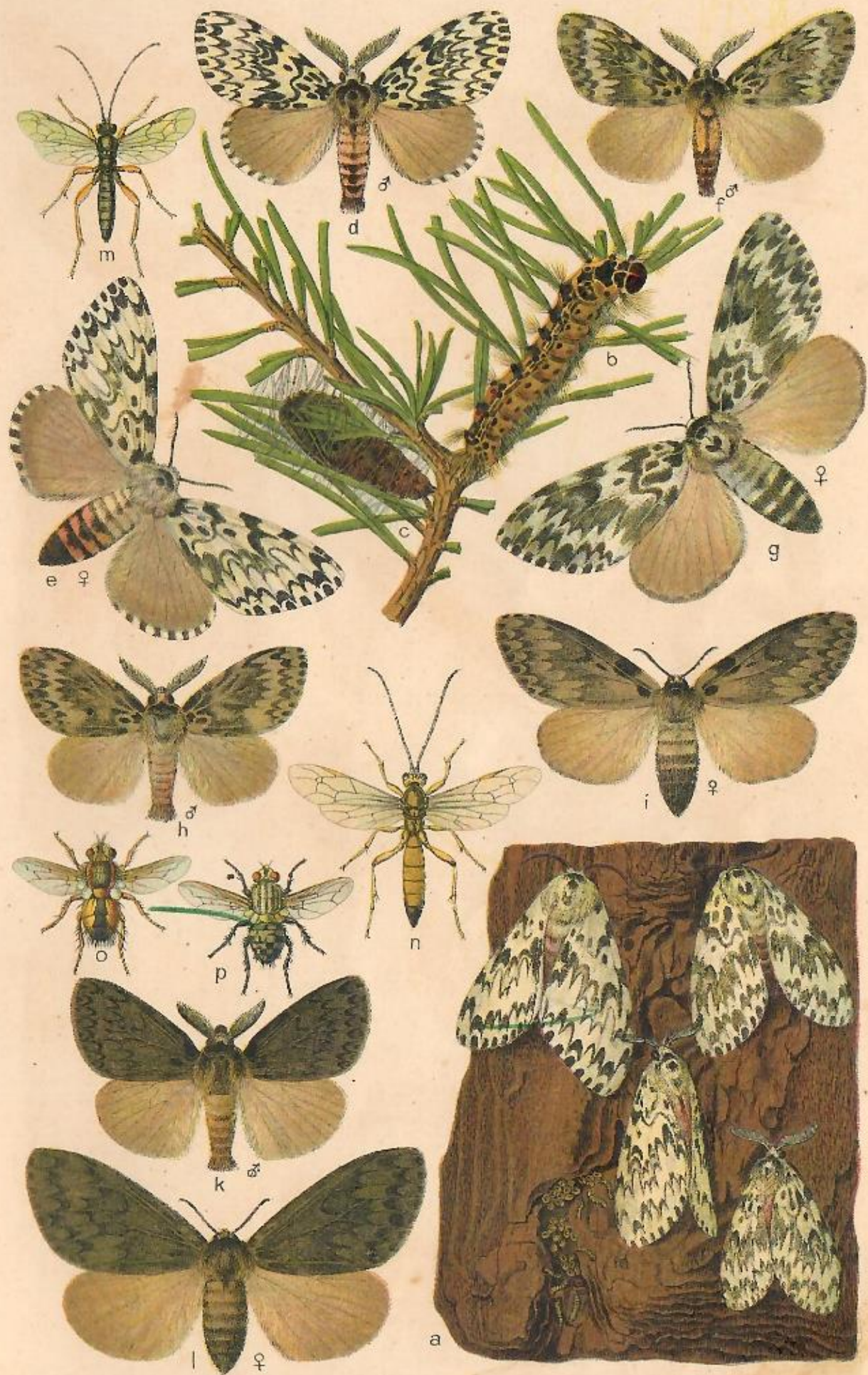
1. *Stauropus fagi*. 2. *Drymonia trimacula*. 3. *Notodonta ziczac*. 4. *dromedarius*. 5. *trepida*. 6. *Ochrostigma melagona*.



1. *Pterostoma palpina*. 2. *Phalera bucephala*. 3. *Pygaera anachoreta*. 4. *Thaumetopoea processionea*. 5. *pinivora*.

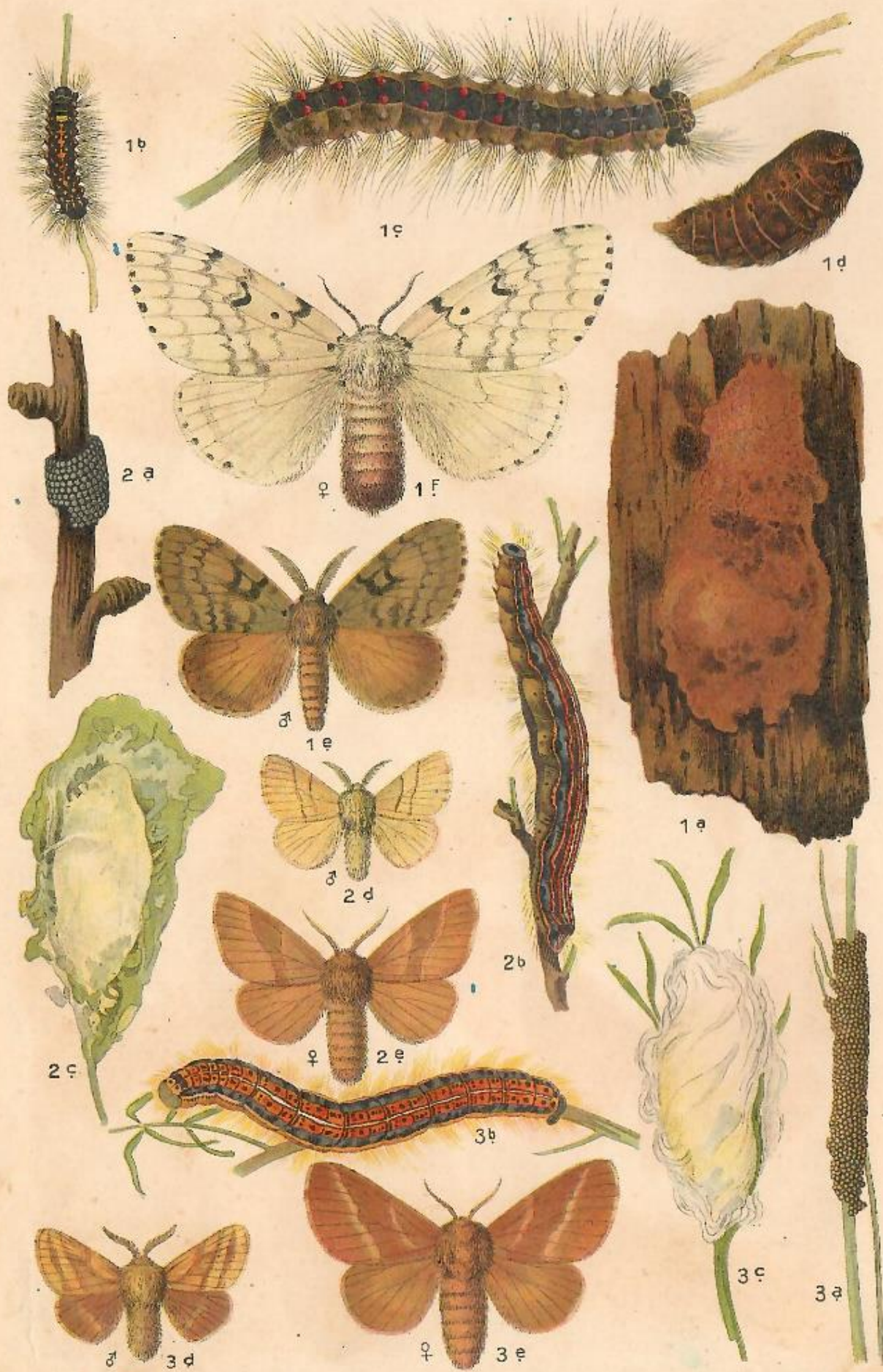


1. *Dasychira fascelina*. 2. *Euproctis chrysorrhoea*. 3. *Porthesia*

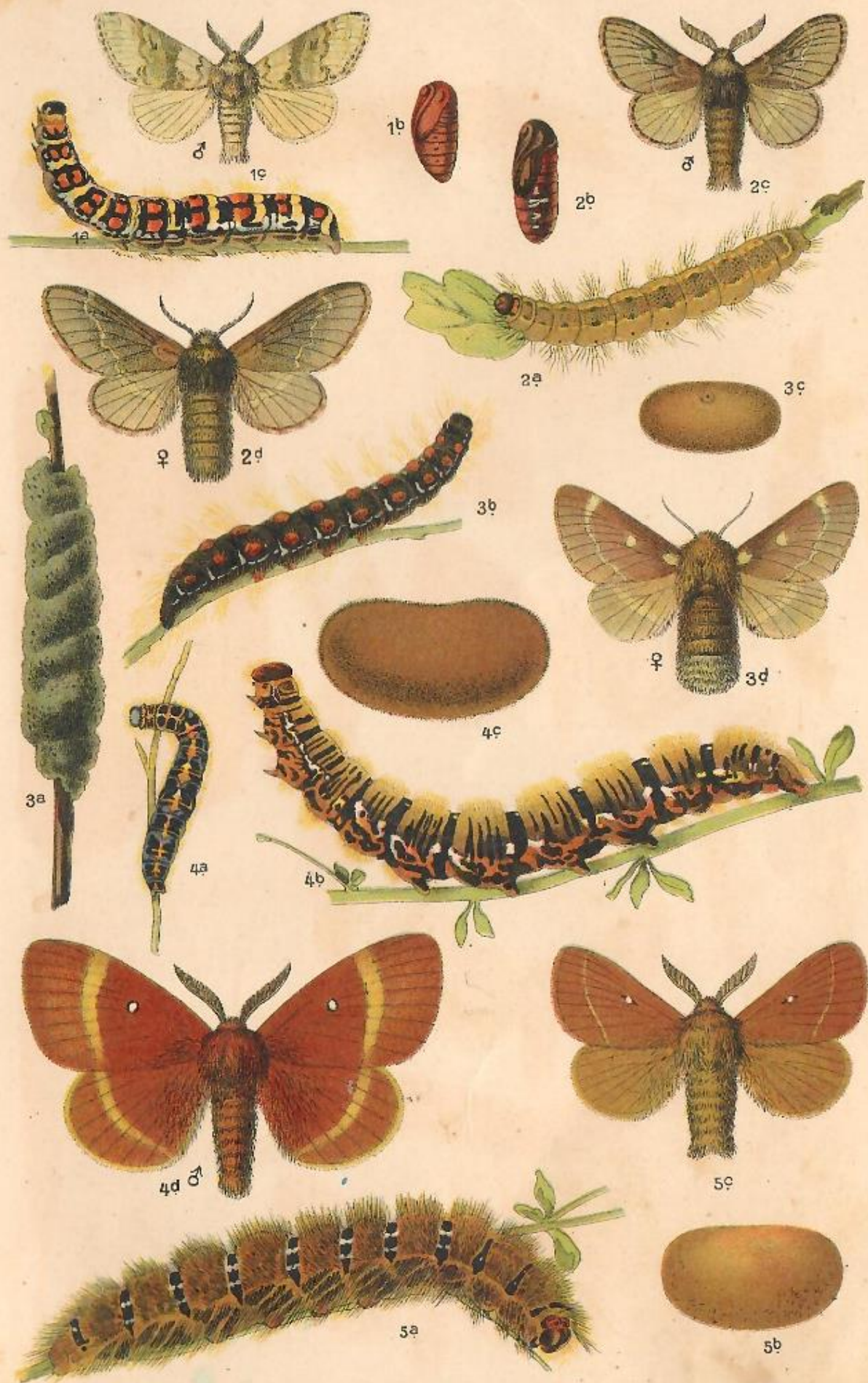


*Lymantria monacha*

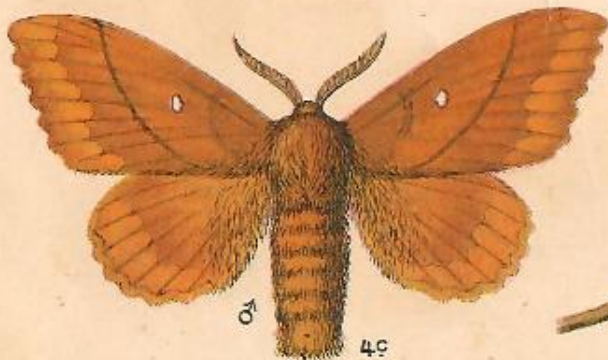
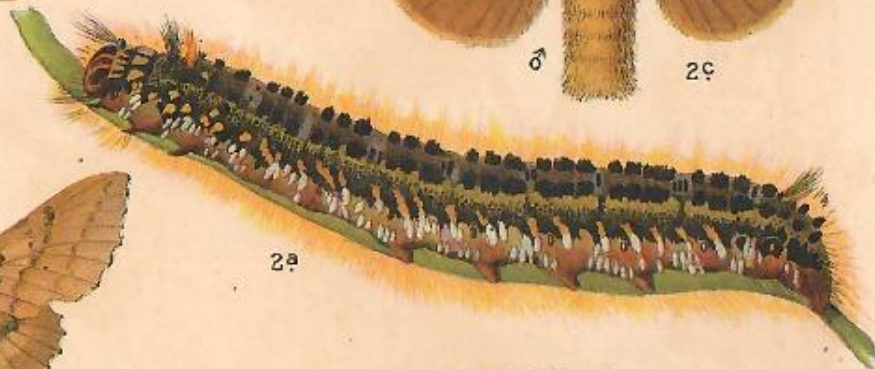
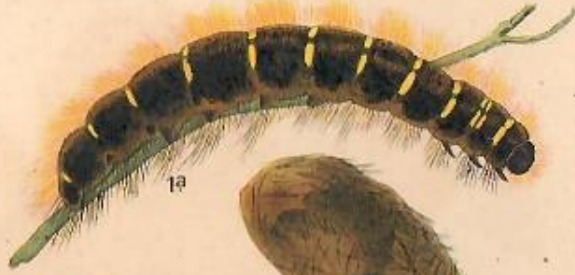
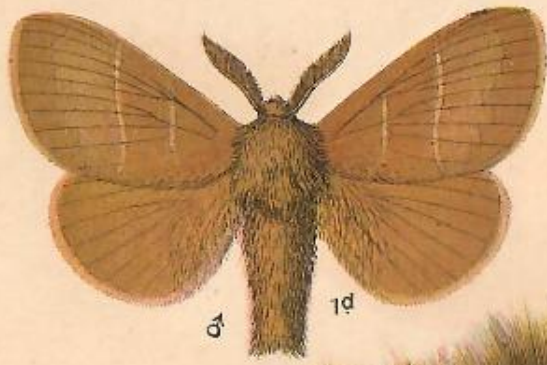




1. *Lymantria dispar*. 2. *Malacosoma neustria*, 3. *castrensis*.

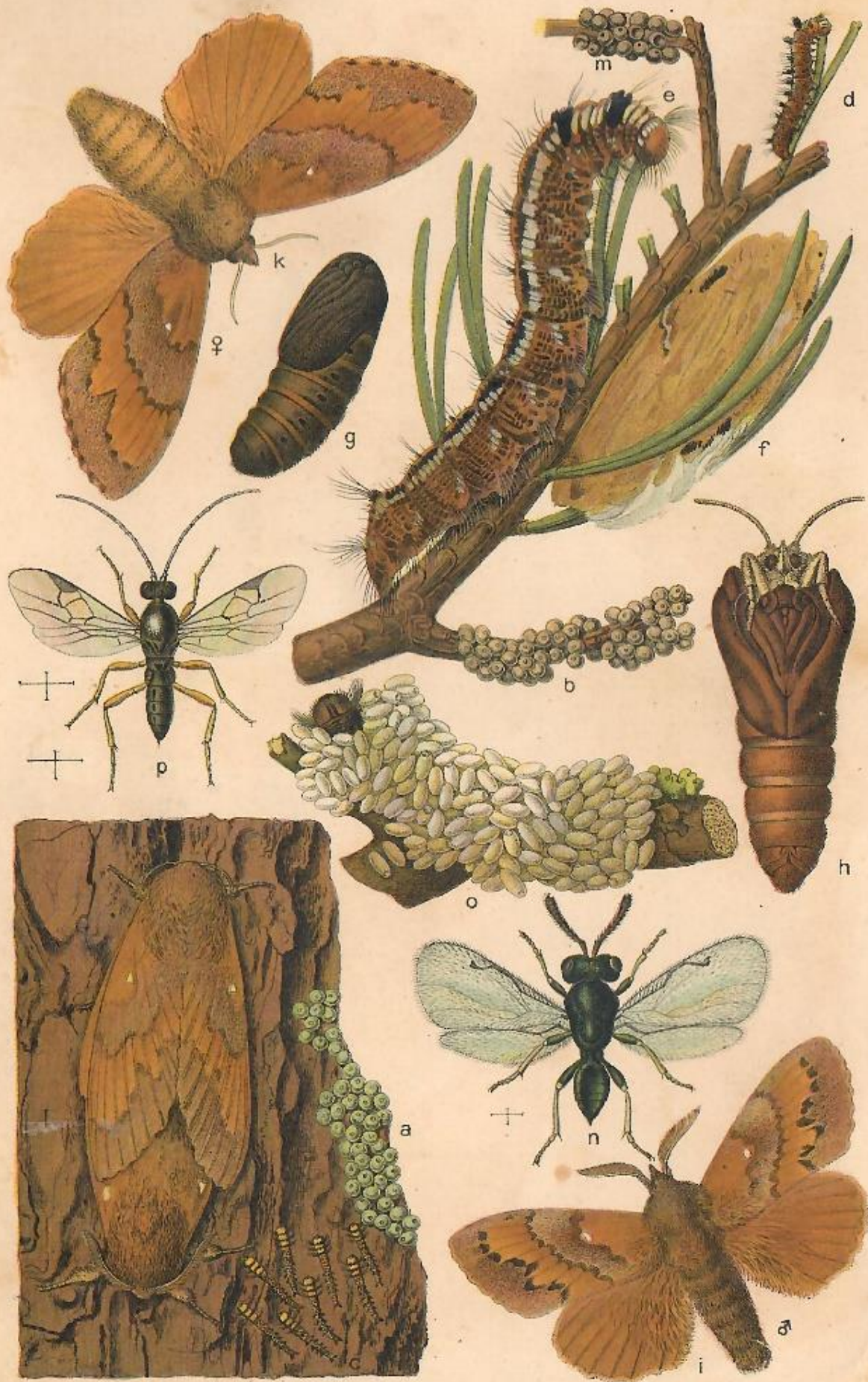


1. *Trichiura crataegi*. 2. *Poecilocampa populi*. 3. *Epicnaptera lanestris*. 4. *Epilobiana caryocarpae*. 5. *Epilobiana caryocarpae*.



1. *Macrothylacia rubi*. 2. *Cosmotriche potatoaria*. 3. *Epicnaptera tremulifolia*. 4. *Odenocleis pruni*





*Dendrolimus pini.*



1. *Endromis versicolora*. 2. *Saturnia pavonia*, 3. *spini*.



2c



2b

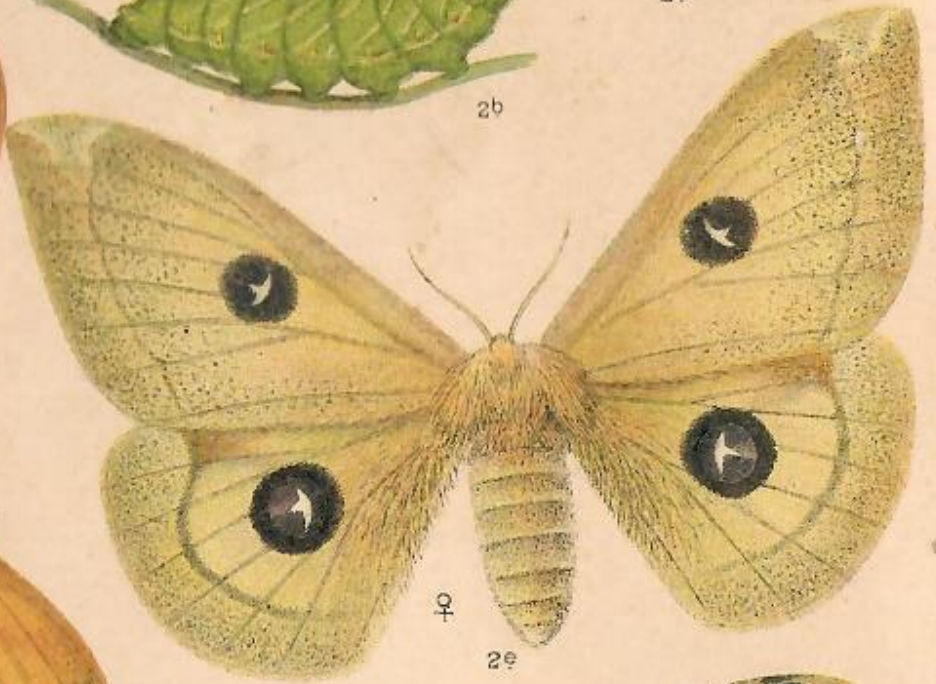


2a



♂

2d



♀

2e



3a



♂

1.



3b



5c



5b



5a



2c



2b

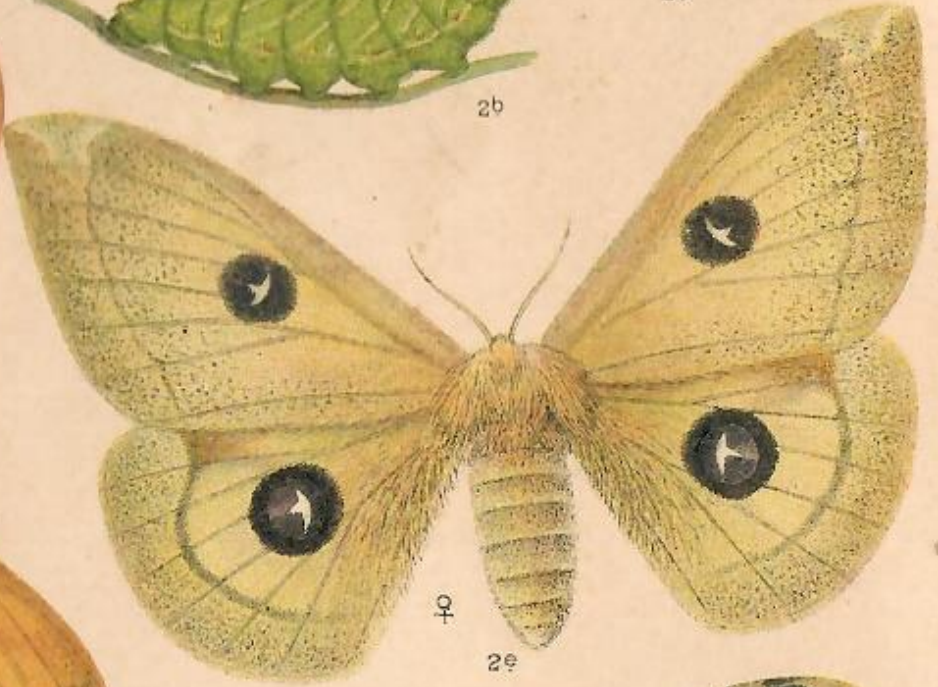


2a



♂

2d



♀

2e



3a



♂

1.



3b



5c

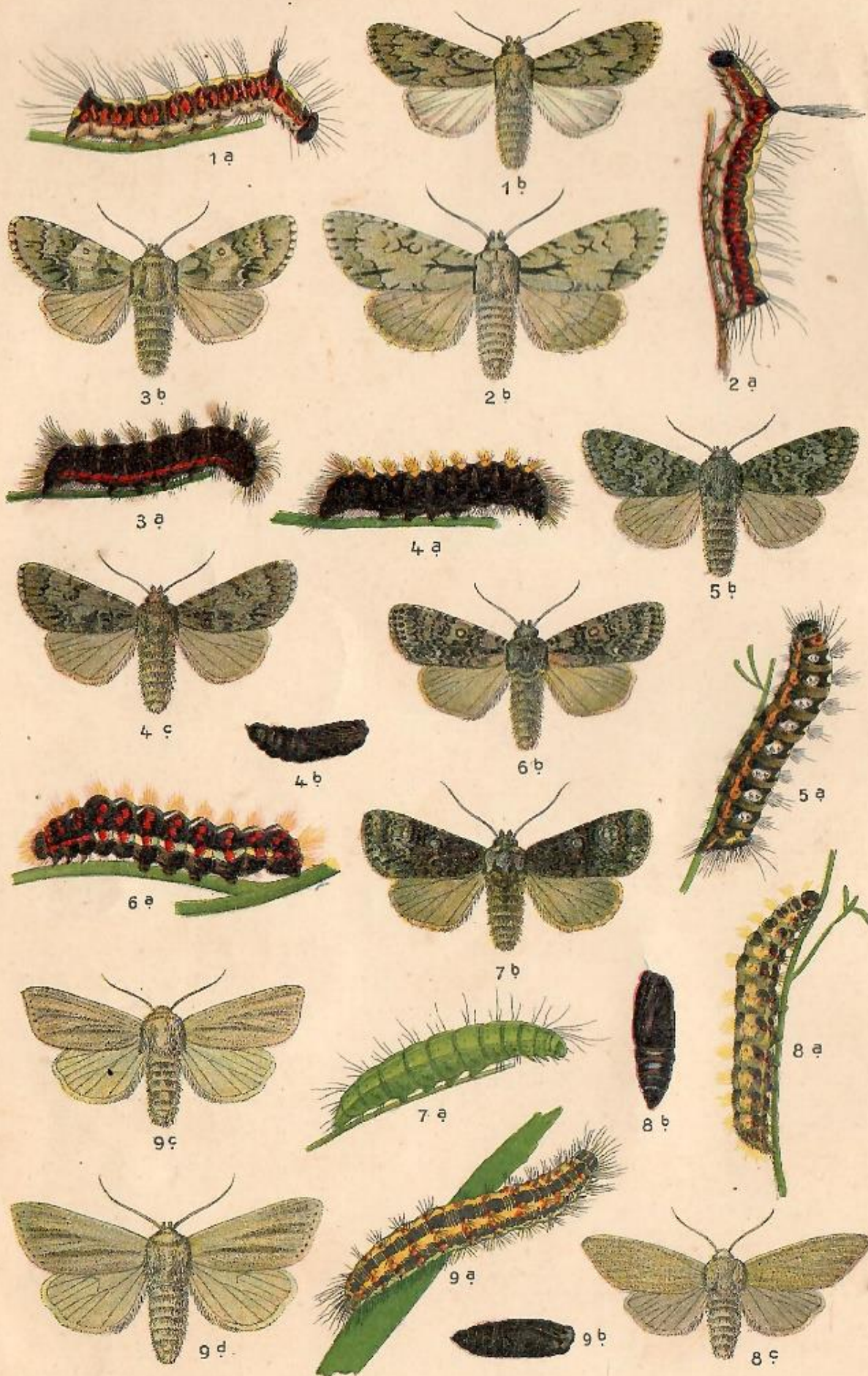


5b

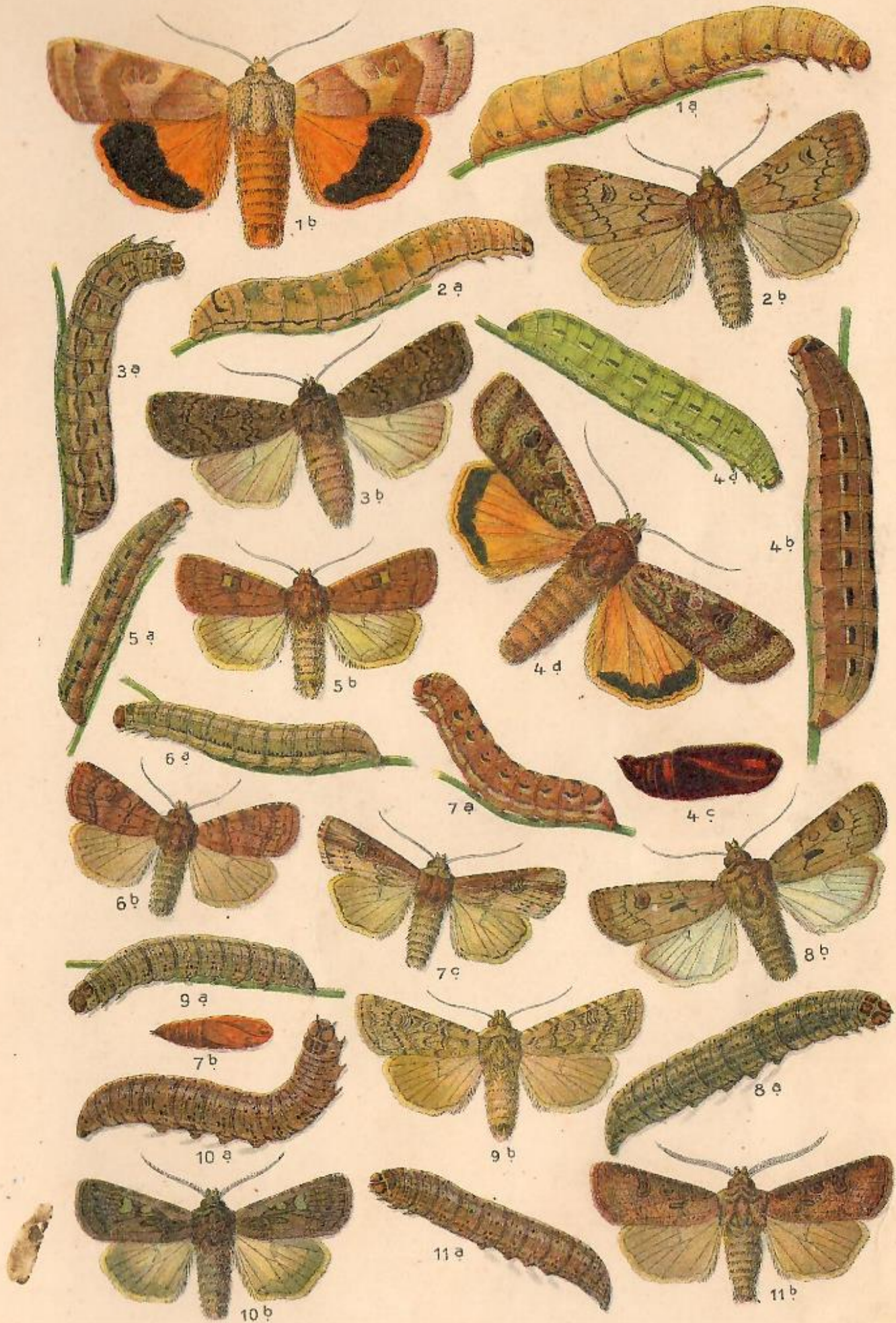


5a

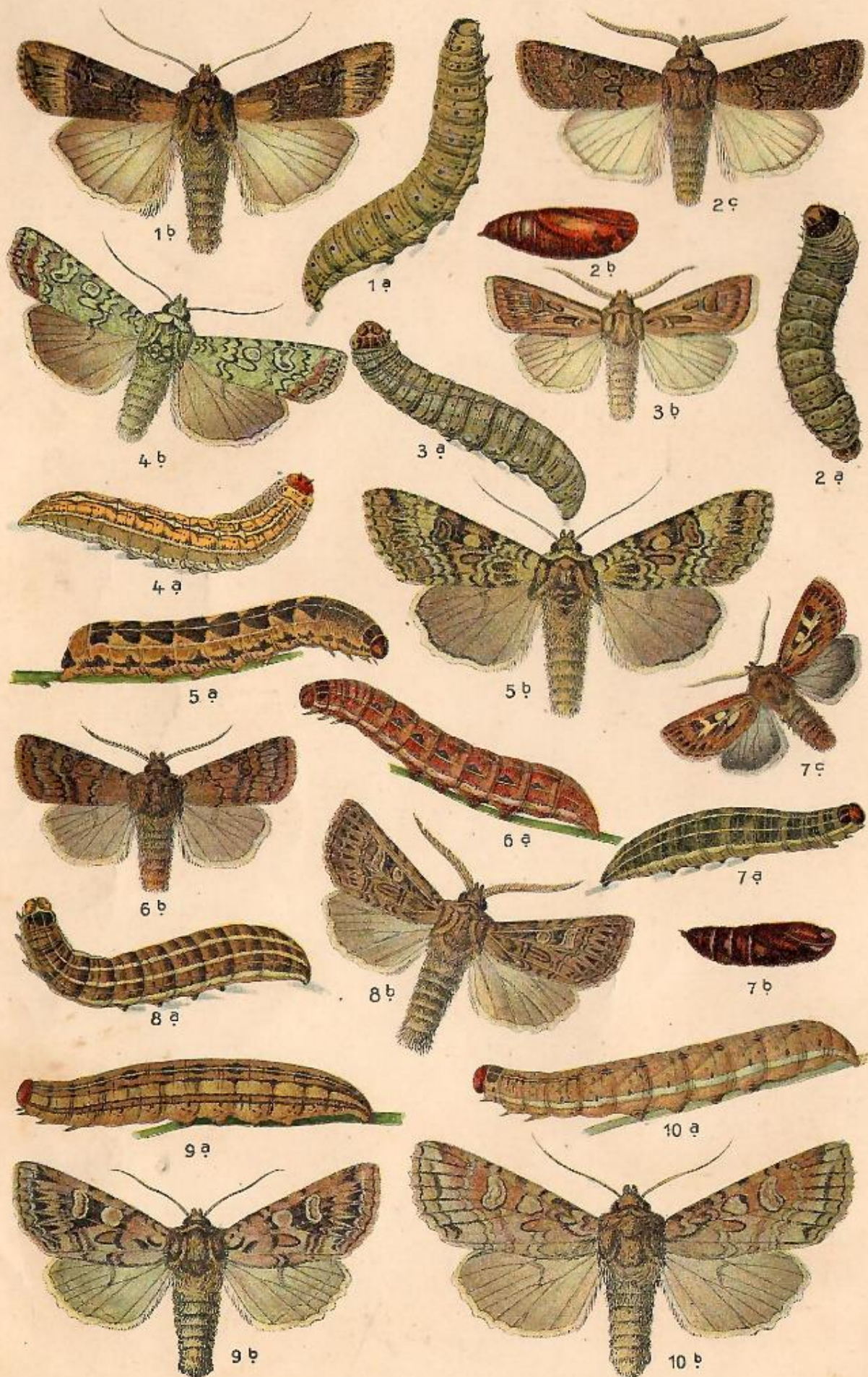




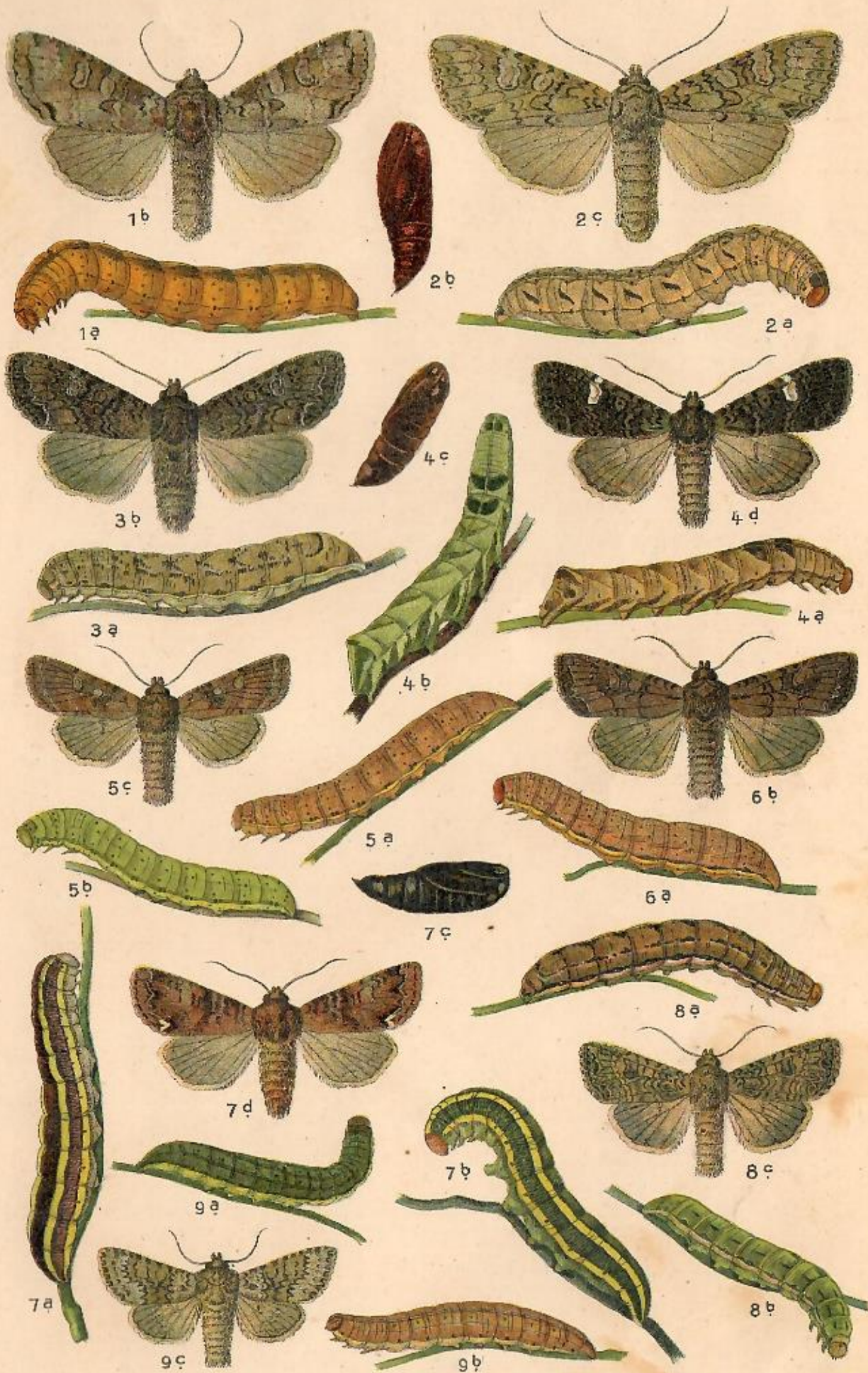
1. *Acronycta psi*, 2. *cuspis*, 3. *menyanthidis*, 4. *auricoma*, 5. *euphorbiae*,  
 6. *rumicis*. 7. *Craniophora ligustri*. 8. *Simyra nervosa*. 9. *Arsilonche*  
*albovenosa*.



1. *Agrotis fimbria*, 2. *augur*, 3. *obscura*, 4. *pronuba*, 5. *xanthographa*, 6. *rubi*,  
7. *putris*, 8. *exclamationis*, 9. *cursoria*, 10. *tritici*, 11. *corticea*.



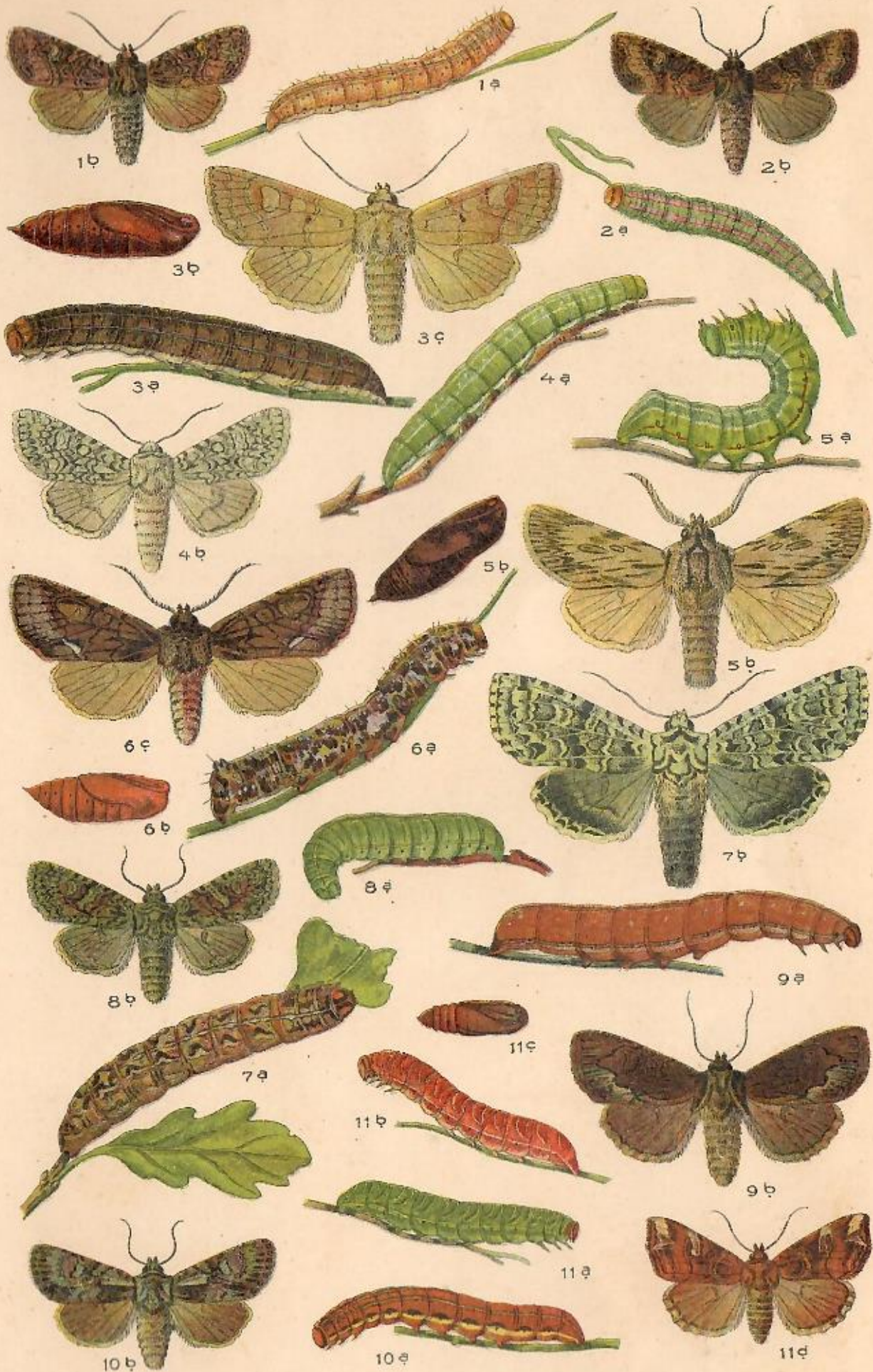
1. *Agrotis ypsilon*, 2. *segetum*, 3. *vestigialis*, 4. *praecox*, 5. *prasina*.  
 6. *Pachnobia rubricosa*. 7. *Charaearas graminis*. 8. *Epineuronia popularis*.  
 9. *Mamestra leucophaea*, 10. *advena*.



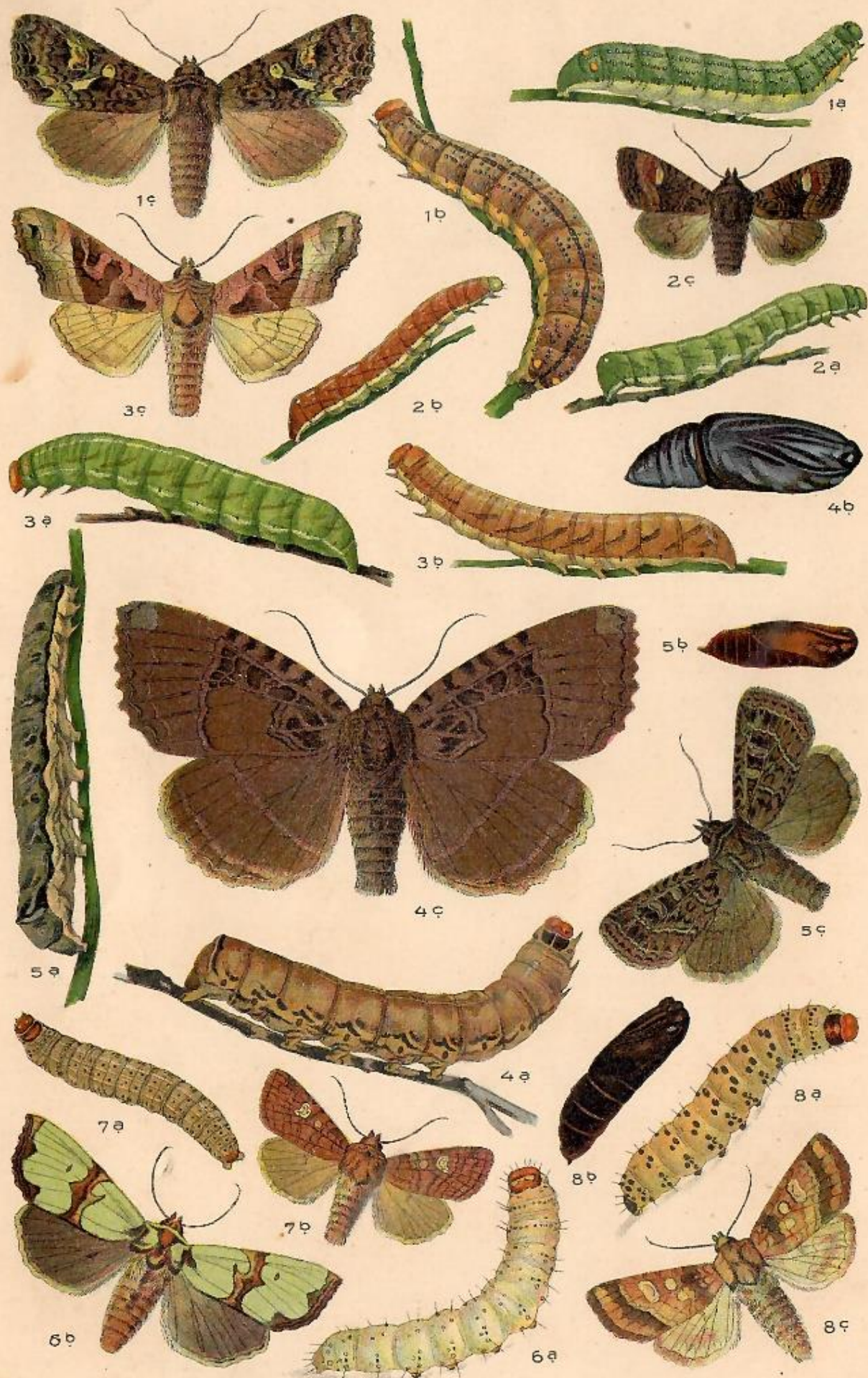
1. *Mamestra tinctoria*, 2. *nebulosa*, 3. *brassicae*, 4. *persicariae*, 5. *oleracea*,  
6. *dissimilis*, 7. *pisi*, 8. *trifolii*, 9. *chrysozona*.



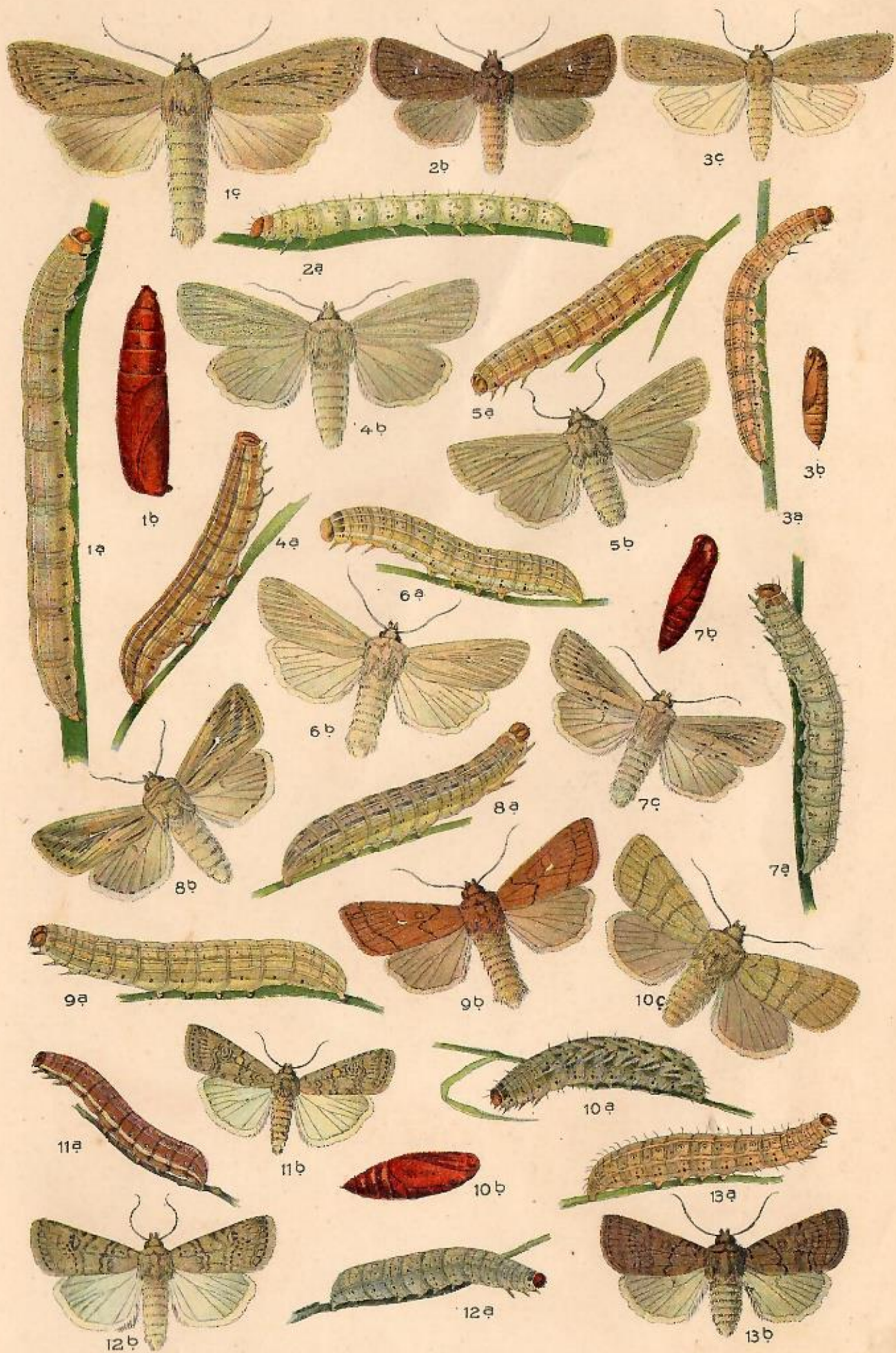
1. *Dianthoecia capsicola*, 2. *cucubali*, 3. *irregularis*. 4. *Miana ophiogramma*, 5. *strigilis*. 6. *Bryophila muralis*. 7. *Diloba caeruleocephala*. 8. *Valeria jaspidea*. 9. *Hadena ochroleuca*, 10. *monoglypha*, 11. *lateritia*, 12. *basilinea*.



1. *Hadena unanymis*, 2. *secalis*. 3. *Ammoconia caecimacula*. 4. *Polia chi*.  
 5. *Brachionycha sphinx*. 6. *Miselia oxyacanthae*. 7. *Dichonia aprilina*.  
 8. *Dryobota protea*. 9. *Dipterygia scabriuscula*. 10. *Chloantha hyperici*.

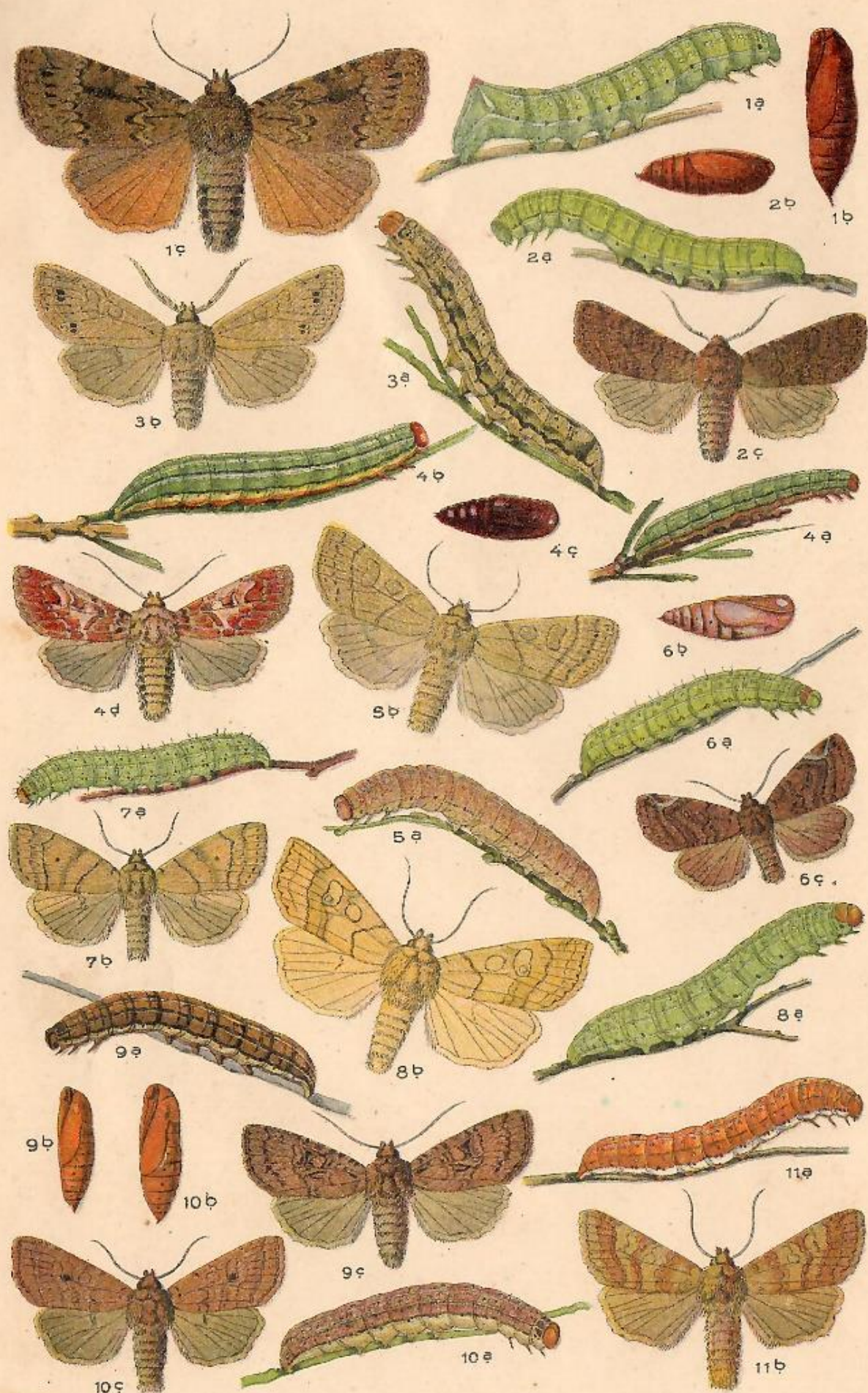


1. *Trachea atriplicis*. 2. *Euplexia lucipara*. 3. *Brotolomia meticulosa*. 4. *Mania maura*. 5. *Naenia typica*. 6. *Jaspidea celsia*. 7. *Hydroecia nictitans*. 8. *Gortyna ochracea*.

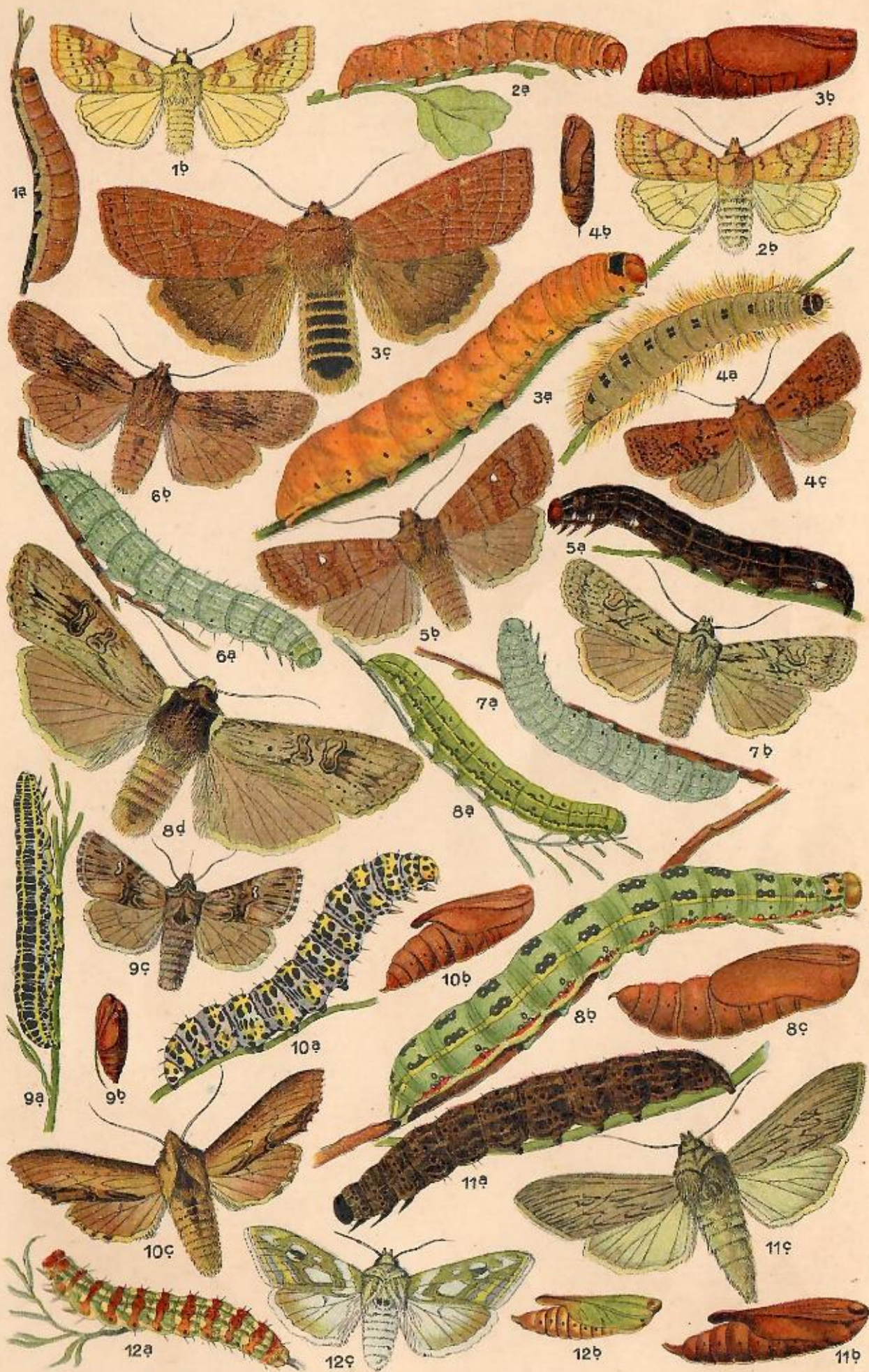


1. *Nonagria typhae*, 2. *geminipuncta*. 3. *Senta maritima*. 4. *Leucania impudens*, 5. *impura*, 6. *pallens*, 7. *obsoleta*, 8. *l-album*, 9. *conigera*.  
 10. *Grammesia trigrammia*, 11. *Caradonia ariva*, 12. *quadripunctata*





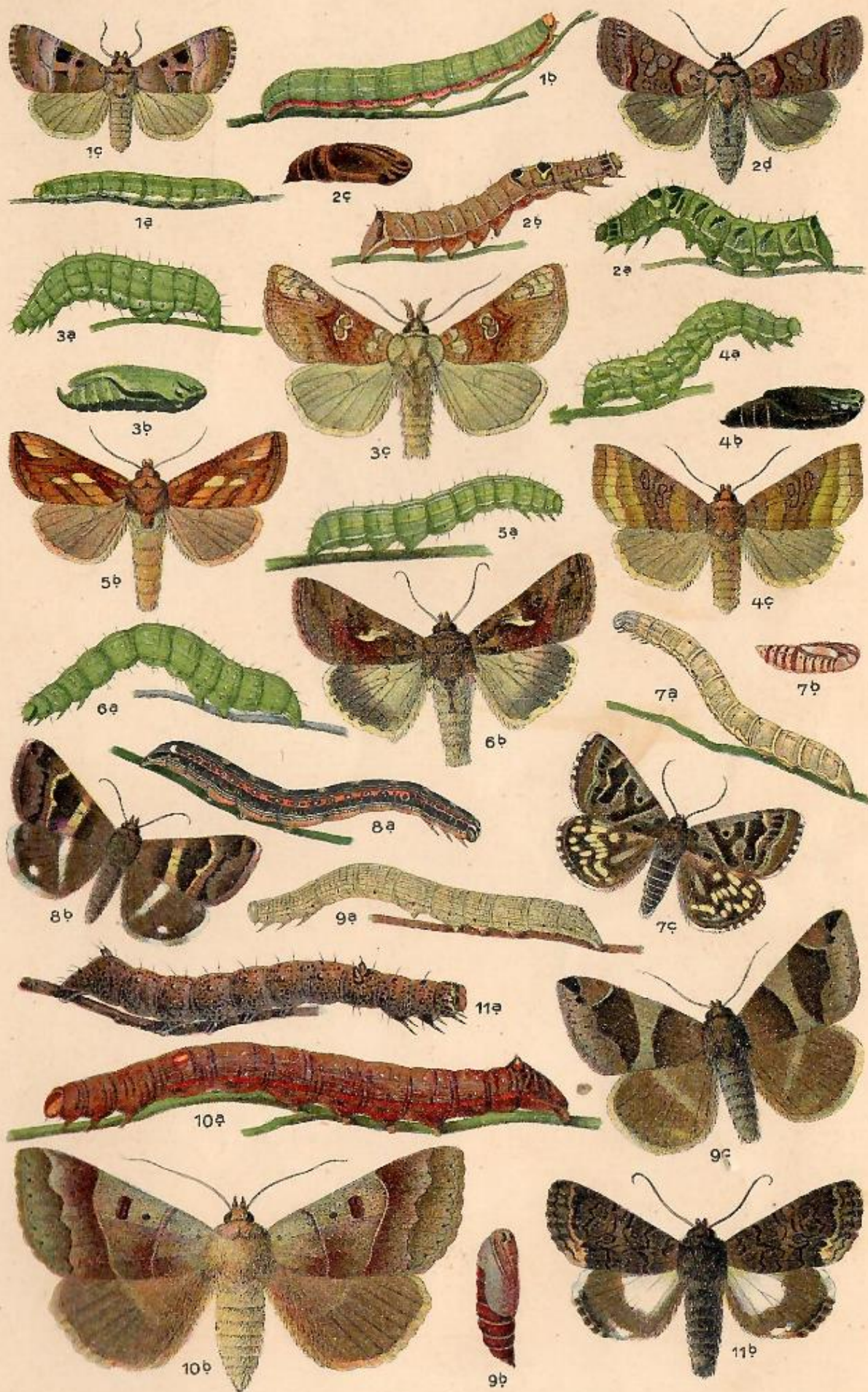
1. *Amphipyra pyramidea*. 2. *Taeniocampa incerta*, 3. *munda*. 4. *Panolis griseovariegata*. 5. *Mesogona acetosellae*. 6. *Calymnia pyralina*, 7. *trapezina*. 8. *Cosmia paleacea*. 9. *Dyschorista fissipuncta*. 10. *Orthosia lota*,  
*Denitominis* *pauc.*



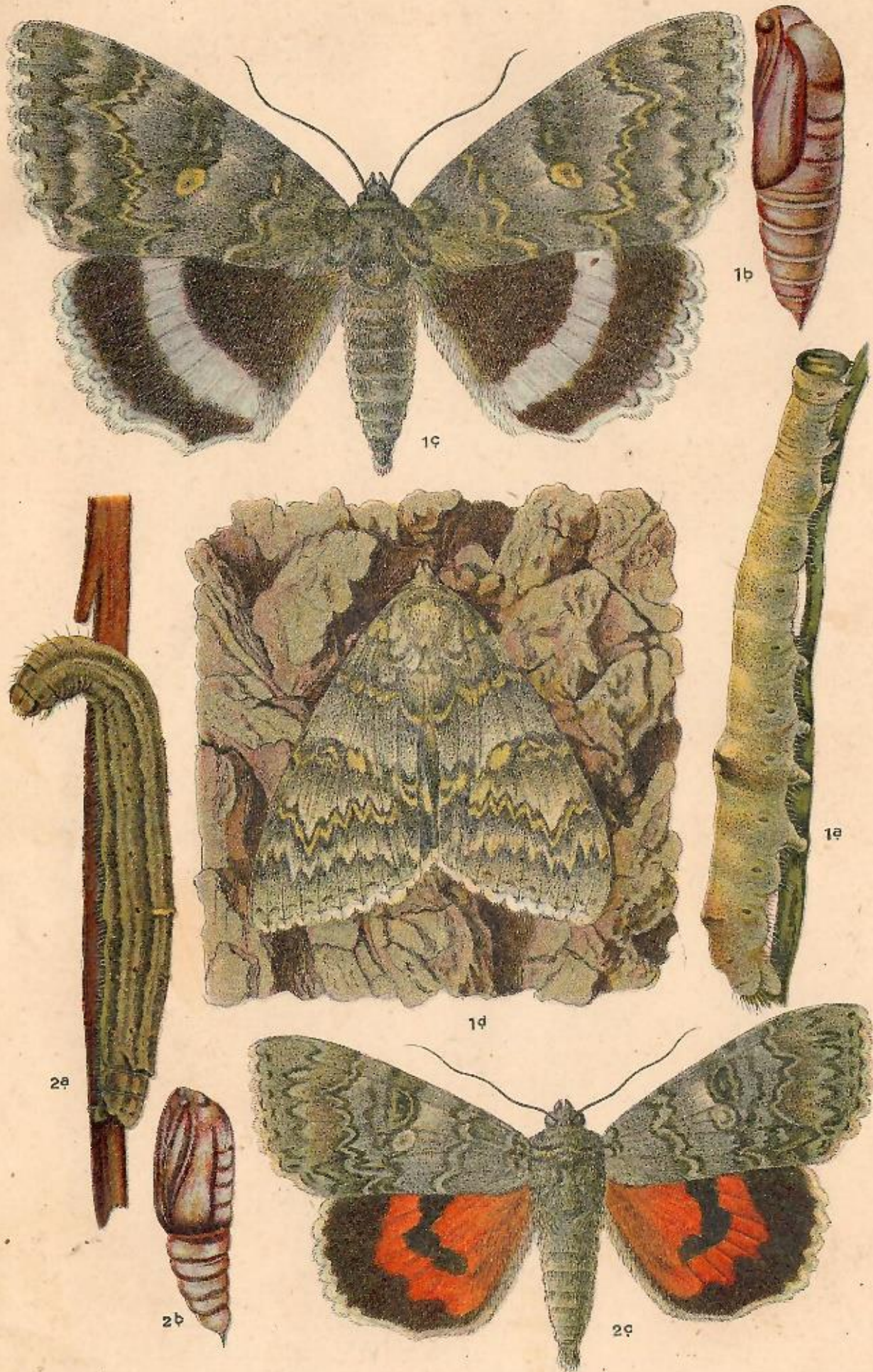
1. *Xanthia fulvago*. 2. *Hoporina croceago*. 3. *Orrhodia fragariae*, 4. *rubiginea*. 5. *Scopelosoma satellitia*. 6. *Xylina socia*, 7. *ornithopus*. 8. *Calocampa exoleta*. 9. *Calophasia lunula*. 10. *Cucullia verbasci*. 11. *umbratica*.



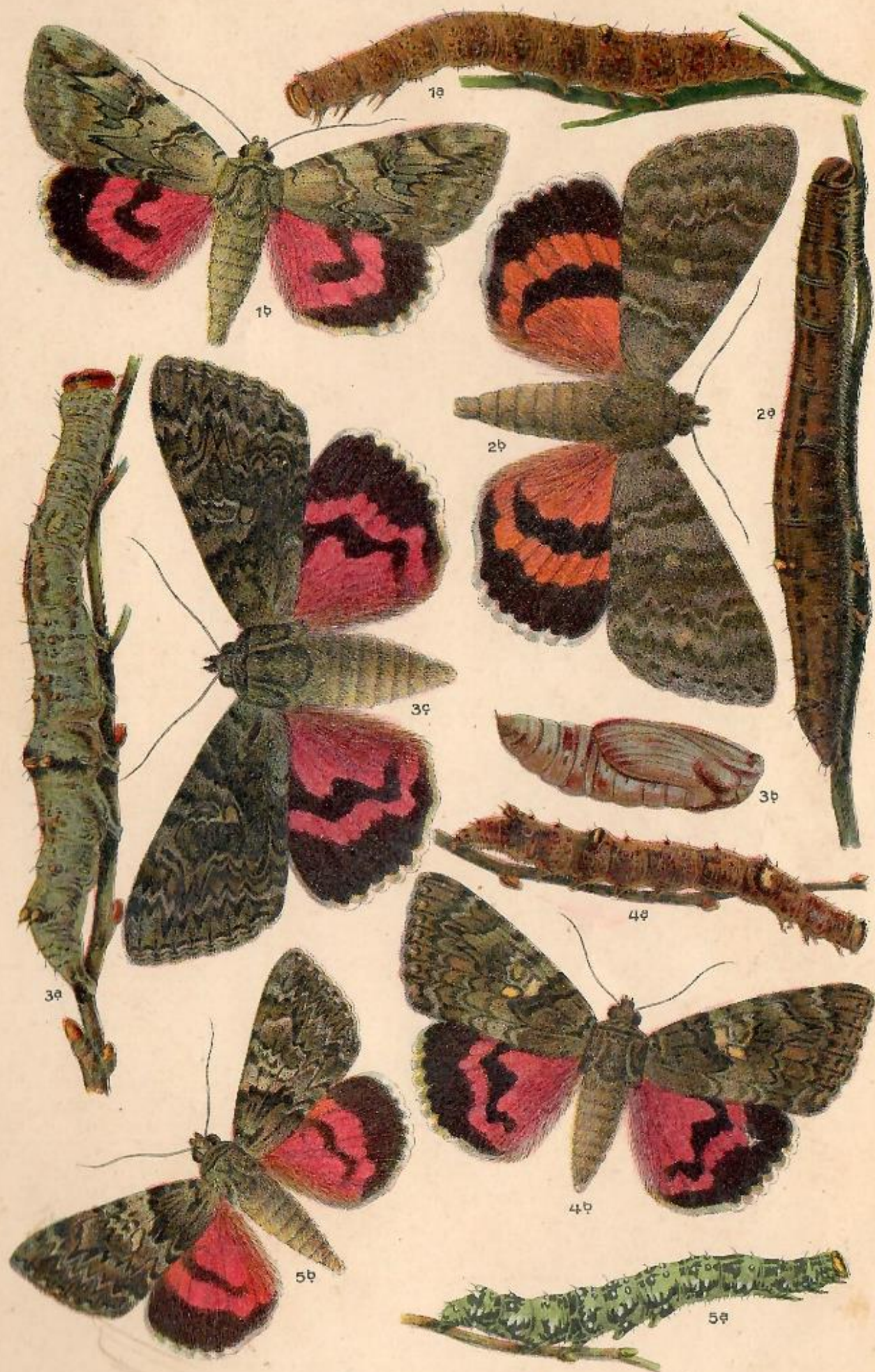
1. *Cucullia lucifuga*, 2. *lactucae*. 3. *Anarta myrtili*. 4. *Heliothis dipsacea*,  
 5. *armigera*. 6. *Chariclea delphinii*, 7. *Pyrrhia umbra*, 8. *Acontia luctuosa*,  
 9. *Thalpocharis communimacula*. 10. *Erastria argentula*. 11. *Emmelia*



1. *Telesilla amethystina*. 2. *Abrostola triplasia*. 3. *Plusia moneta*, 4. *chrysis*, 5. *festucae*, 6. *gamma*. 7. *Euclidia mi*. 8. *Leucanitis stolidus*. 9. *Grammodes algira*. 10. *Pseudophia lunaris*, 11. *Catephia alchymista*.



1. *Catocala fraxini*, 2. *nupta*.



1. *Catocala electa*, 2. *elocata*, 3. *dilecta*, 4. *sponsa*, 5. *promissa*.